

# Austrotherm UNIPLATTE®



## Wet rooms in many different designs

- ▶ Waterproof panels
- ▶ Immediate tiling with no waiting times
- ▶ Easy to use
- ▶ High levels of bearing capacity and stability

# Austrotherm UNIPLATTE®

Universal application



The Austrotherm UNIPLATTE® panel is a perfect base element made from pink extruded polystyrene rigid foam, coated with a synthetic resin modified mortar and reinforced with a glass fibre net on both sides. Austrotherm UNIPLATTE® is waterproof, heat-insulating and robust. It is particularly suitable for laying tiles using the glue-fixing method.

## Area of application:

Each individual strength has its special area of application. Panels of 6 mm up to 20 mm are mainly used as a substrate when using ceramic tiles and panels in the glue-fixing method. With thicker panels from 30 mm to 120 mm, you can also quickly solve constructional problems. Austrotherm UNIPLATTE® is suitable for cladding walls and floors in dry areas and wet areas, and for indoor and outdoor areas, combined with sealants.

## The complete range:

With the right accessories, the versatile application spectrum for Austrotherm UNIPLATTE® is limitless. Connecting brackets, sealing tape, dowels and fastening sets that are tailored to the individual application, along with the Austrotherm UNIPLATTE® panels with thicknesses of 4, 6, 10, 20, 30, 40, 50, 60, 70, 80, 100, 120 mm and dimensions of 2600 x 600 or 1300 x 600 mm, form a complete system. Prefabricated elements are available for pipe claddings, dividing walls or, for example, washstands, shower trays and bathtub cladding. Available in thicknesses up to 120 mm.

**NEW:** Available in dimensions of 2400 x 600 mm and 1200 x 600 mm.\*\*

## Austrotherm UNIPLATTE®

Thickness mm	Thickness mm
4*, 6*, 10*	As a corrective panel, e.g. for half-height tiled bathrooms. Old tiles often have a thickness of 4 – 6 mm. Walls can be retiled to ceiling height without having to remove the old tiles. If the wall was previously tiled using the thick-film procedure, the 10 mm panel is suitable.
12,5	Used, for example, as a corrective panel that finishes flush for gypsum plasterboard in wet areas and damp areas.
20, 30, 40, 50	For solving all sorts of design problems, e.g. claddings, furniture in the bathing area, such as washstands and shelves, fitting attachments, etc.
60, 70, 80	For solving all sorts of design problems if greater stability is required, e.g. for furniture in the bathing area, for steps.
100, 120	For solving all sorts of design problems if greater stability is required, for example, as free-standing dividing walls for balconies

\* Dimensions: 1300 x 600 mm, format for 10 mm and above: 2600 x 600 mm

\*\* Dimensions: 1200 x 600 mm, format for 10 mm and above: 2400 x 600 mm

## The base element for ceramic surfaces

Simple, quick and clean



The scope for design ideas provided by Austrotherm UNIPLATTE® is extremely wide. Thanks to its easy workability, an extremely wide range of client requirements can be easily put into practice. Austrotherm UNIPLATTE® panels can be used as much for renovations as they can for new buildings.

### The advantages of using Austrotherm UNIPLATTE®:

- ▶ Water-resistant to the highest possible degree
- ▶ Design diversity
- ▶ Outstanding bonding properties
- ▶ Easy to cut
- ▶ Lightweight
- ▶ High heat insulation
- ▶ Dimensionally accurate
- ▶ Flush surface
- ▶ Frost-resistant
- ▶ High resistance to pressure
- ▶ Flame-retardant

### Anwendungen:

- ▶ Combined with sealants
- ▶ To clad walls and floors in dry rooms and wet rooms
- ▶ To clad walls and floors in renovated and new buildings
- ▶ To produce new constructions, such as, built-in wash basins, shelves, steps, water tanks, trays, round claddings and much more.
- ▶ To construct dividing walls, for example, for showers, toilets, etc.
- ▶ To clad drain pipes
- ▶ To cover wooden floors and wooden frame constructions



Beautifully designed washstands are as simple to create as the cladding for bathroom walls.



Separating walls for building shower cubicles provide the best substrate for ceramic tiling.

# Austrotherm UNIPLATTE®

Simple, quick and clean



When creating dividing walls, forming bathtub claddings and so on, it is best to use Murexin connecting brackets as an assembly aid. These are screwed or nailed into the wall or floor. The Austrotherm UNIPLATTE® panels are then inserted into the brackets, meaning that the panel is immediately held in place. In wet rooms, recesses in the walls and floor must be sealed using sealing tape and sealing sleeves.

## Forming joints and coverings

All connections, inside corners, wall connections and floorcover connections can be flexibly formed using silicon. In addition, all longitudinal and head joints should be glued using silicon. We recommend that you use Murexin's Sanitary Silicon for this. Usually, all head and longitudinal joints must be pasted over with 10 cm-wide glass fabric. The strips are inserted into the tile adhesive and then filled into the joint. In areas that are in direct contact with water, for example, a shower or anything else that comes into contact with flowing and still water, instead of the fabric strips, the sealing tape must be inserted into the wall and floor recesses. The sealing tape is applied as described to the right here.

## Subsequent work

After the adhesive mortar has hardened (after approx. 12 hours or, when using Murexin Quick Flex Adhesive Mortar, after approx. 3 hours), the ceramic surface can then be applied in the form of tiles, panels or a mosaic. When laying ceramic surfaces, the processing guidelines from Murexin tile adhesive mortar apply.



It is easy to attach Murexin connecting brackets.



The Austrotherm UNIPLATTE® panels can be fitted immediately. This ensures a right angle.



Even the Murexin connecting bracket can be fitted quickly.



One Austrotherm UNIPLATTE® already fits nicely into the other.



Panel joints are closed off using glass fibre fabric strips.



Then insert the sealing tape, fill it using wall leveller and the smooth substrate is ready.

## Easy to use

### Simple processing of the Austrotherm UNIPLATTE®



The Austrotherm UNIPLATTE® can be quickly and easily cut using a handsaw or a Stanley knife.



A jigsaw is used, for example, to cut round sections in a desired shape.



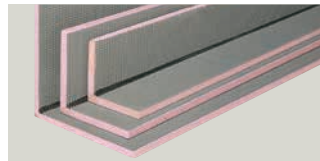
Small amounts of quick-setting construction adhesive are applied point by point to the back of the panel.



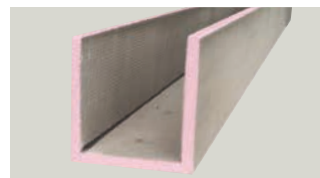
The adhesive holds perfectly – on screed as well as concrete. Substrates that cannot bear weight must be secured using additional anchoring.

## Austrotherm UNIPLATTE® L-/U-shaped boards

### Save costs and time



L-shaped angle



U-shaped angle

The Austrotherm UNIPLATTE® L-/U-shaped boards are ceiling-height prefabricated elements. They make it considerably easier to create horizontal and vertical pipe claddings – a process that is usually both expensive and time-consuming. Time-consuming brick laying & plastering or substructures are a thing of the past. The L-/U-shaped board can only be cut using a saw and it is fitted as part of the tiling work.

- ▶ Ceiling-height prefabricated element
- ▶ Simple mechanical fitting using a corner bracket
- ▶ Ready-made tiling substrate

## Austrotherm UNIPLATTE® bathtub element

### Custom-fit cladding elements



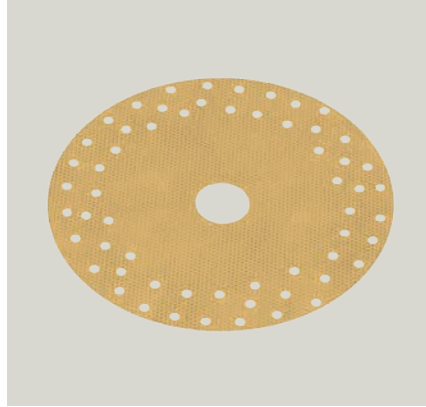
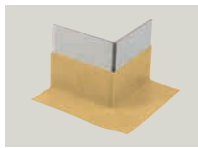
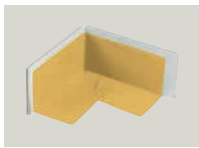
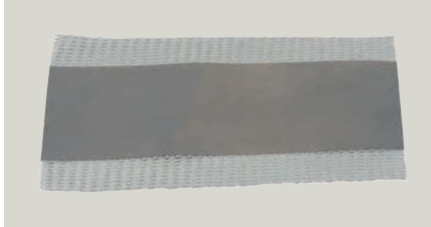
The Austrotherm UNIPLATTE® bathtub element is a solution at the right size for bath-end and bath-side cladding of standard bathtubs. The inclusion of height-adjustable feet means that unevenness can easily be equalised.

- ▶ Simple mechanical fitting using a corner bracket
- ▶ Ready-made tiling substrate
- ▶ Custom-fit cladding elements for standard bathtubs

Practical, hard-plastic prefabricated levelling foot. Can be easily set to precisely the required height (up to approx. 10 cm) using a 17 mm open-end wrench.

## Austrotherm UNIPLATTE® accessories

For best processing in wet areas



### Austrotherm sealing tape

Sealing of inner and outer corners in wet areas.  
Sealing of board edges in wet areas

### Austrotherm sealing sleeves

Secure sealing of pipe ducts in wet areas.

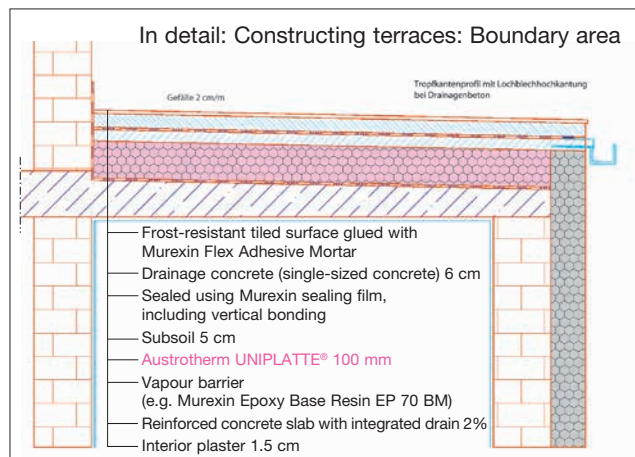
### Austrotherm glass fabric

For smoothing over butt joints.

## Insulated roof principle when constructing terraces

The Austrotherm UNIPLATTE® serves all your needs

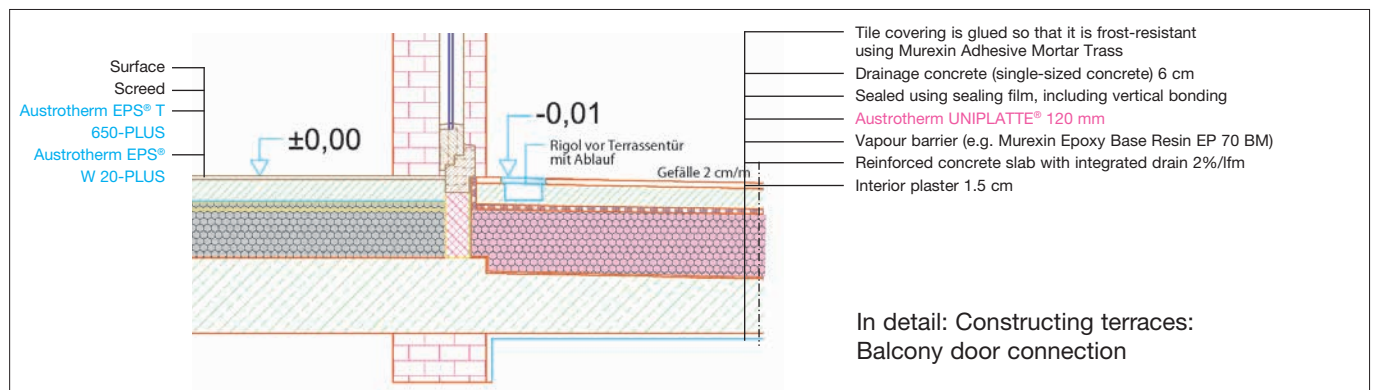
Austrotherm terraces that are built in accordance with the insulated roof principle are perfect for terraces that are located above rooms.



### Recommended surface material for constructing terraces:

- ▶ Extruded ceramic panels with low water absorption  $E < 3\%$  in accordance with DIN-EN 121
- ▶ Dry-pressed tiles and panels with low water absorption  $E < 3\%$  in accordance with DIN 176 (frost-resistant in accordance with DIN EN ISO 10545-12)
- ▶ Floor clinker slabs
- ▶ Natural and artificial stone

It is preferable to have light-coloured surfaces in order to prevent them from becoming extremely hot due to solar radiation.



## Austrotherm UNIPLATTE®

### Technical specifications

Austrotherm UNIPLATTE®		Dimensions (mm)*	Thickness (mm)	Pack. units
Uniplatte 4	2,3 kg/m <sup>2</sup>	1300 x 600	4	80 Pcs/pal
Uniplatte 6	2,4 kg/m <sup>2</sup>	1300 x 600	6	160 Pcs/pal
Uniplatte 10	2,5 kg/m <sup>2</sup>	1300 x 600	10	108 Pcs/pal
Uniplatte 10	2,5 kg/m <sup>2</sup>	2600 x 600	10	108 Pcs/pal
Uniplatte 12,5	2,6 kg/m <sup>2</sup>	2600 x 600	12,5	90 Pcs/pal
Uniplatte 20	2,8 kg/m <sup>2</sup>	2600 x 600	20	60 Pcs/pal
Uniplatte 30	3,2 kg/m <sup>2</sup>	2600 x 600	30	40 Pcs/pal
Uniplatte 40	3,5 kg/m <sup>2</sup>	2600 x 600	40	30 Pcs/pal
Uniplatte 50	3,8 kg/m <sup>2</sup>	2600 x 600	50	24 Pcs/pal
Uniplatte 60	4,1 kg/m <sup>2</sup>	2600 x 600	60	20 Pcs/pal
Uniplatte 70	4,4 kg/m <sup>2</sup>	2600 x 600	70	18 Pcs/pal
Uniplatte 80	4,8 kg/m <sup>2</sup>	2600 x 600	80	16 Pcs/pal
Uniplatte 100	5,4 kg/m <sup>2</sup>	2600 x 600	100	12 Pcs/pal
Uniplatte 120	6,1 kg/m <sup>2</sup>	2600 x 600	120	10 Pcs/pal
Austrotherm UNIPLATTE® L-shaped angle		Dimensions (mm)**	Thickness (mm)	Pack. units
L-shaped pipe boxing 15/15		2600 x 150/150	20	60 Pcs/pal
L-shaped pipe boxing 20/20		2600 x 200/200	20	40 Pcs/pal
L-shaped pipe boxing 30/30		2600 x 300/300	20	40 Pcs/pal
L-shaped pipe boxing 40/20		2600 x 400/200	20	40 Pcs/pal
Austrotherm UNIPLATTE® U-shaped angle		Dimensions (mm)**	Thickness (mm)	Pack. units
U-shaped pipe boxing 20/20/20		2600 x 200/200/200	20	50 Pcs/pal
U-shaped pipe boxing 20/40/20		2600 x 200/400/200	20	20 Pcs/pal
U-shaped pipe boxing 30/60/30		2600 x 300/600/300	20	12 Pcs/pal
Austrotherm UNIPLATTE® bathtub element		Dimensions (mm)	Thickness (mm)	Pack. units
Head panel 730 (incl. 1 levelling foot)		730 x 600	30	30 Pcs/pal
Length panel 1770 (incl. 2 levelling feet)		1770 x 600	30	30 Pcs/pal
Length piece 2100 (incl. 2 levelling feet)		2100 x 600	30	30 Pcs/pal

#### Technical properties for the extruded polystyrene foam (average values):

Pressure resistance:	0,30 N/m <sup>2</sup>
Thermal conductivity: $\lambda_D$	0,035 W/mK
Diffusion resistance factor: $\mu$	100-200
Water absorption, capillary:	None
Application max. temperature:	70 °C
Fire behaviour:	in accordance with EN 13164: E

**Storage:** All Austrotherm UNIPLATTE® panels must be stored lying flat and in a dry place. The Austrotherm UNIPLATTE® panels must not come into contact with substances that contain solvents.

**Notes:** The information in this brochure is only valid for the current state of technology. Where applicable, property rights must be observed. Legal rights cannot be derived.

Base material is Austrotherm XPS® TOP with great ecological characteristics – the cell content is air.

\* Dimensions: 1200 x 600 mm and 2400 x 600 mm are available

\*\* Dimensions: Length of 2400 mm is available



The Austrian governing body Quality Austria, the leading economy and society contact for all questions regarding integrated management systems, based on quality, environment, safety and health protection management as well as the subject of corporate quality, has issued an ISO certificate for Austrotherm® Austria.

**Austrotherm Dämmstoffe GmbH**  
19322 Wittenberge, Hirtenweg 15  
Tel.: +49 3877 5650-610, Fax: +49 3877 5650-911  
info@austrotherm.de  
**austrotherm.de**