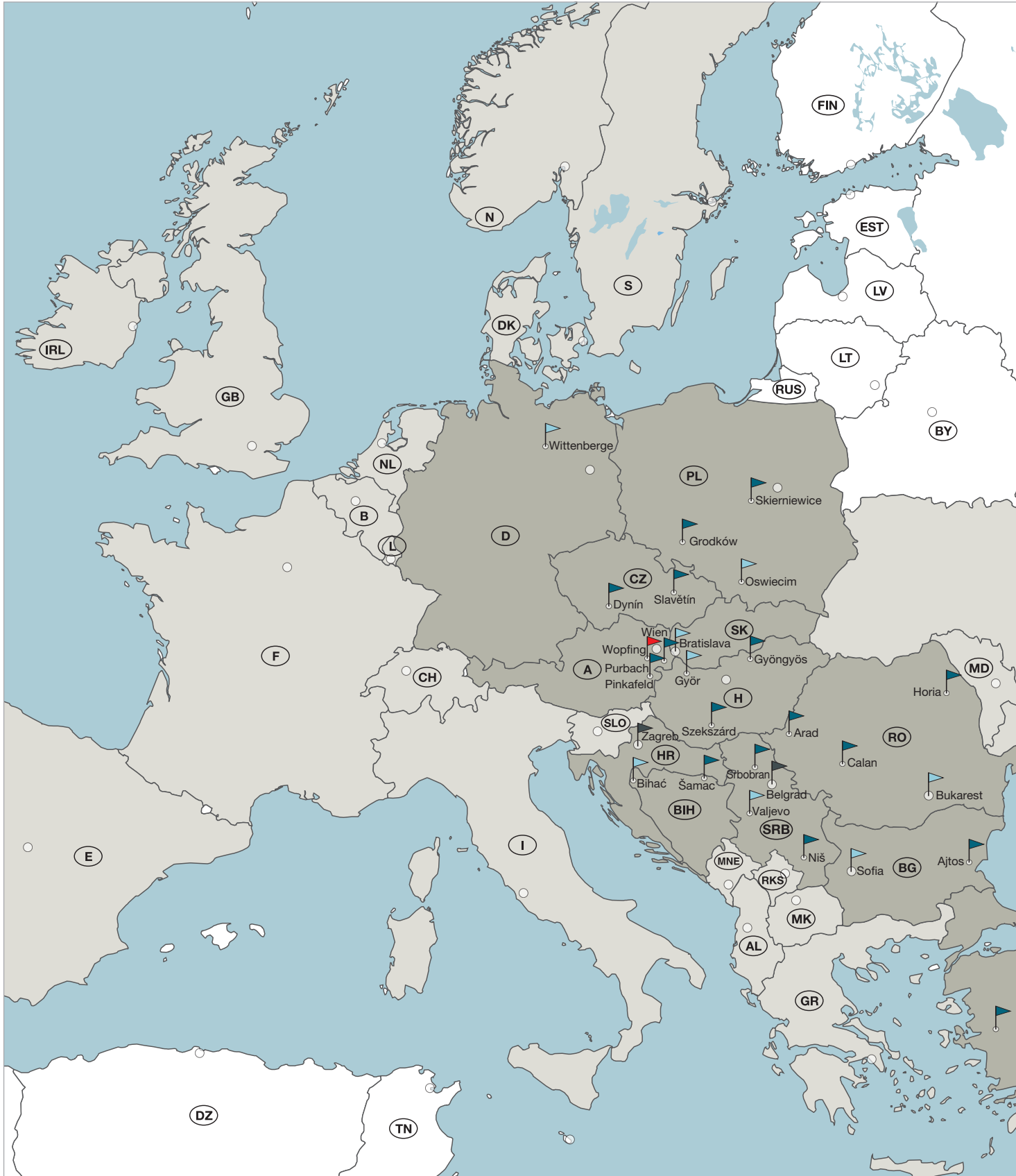


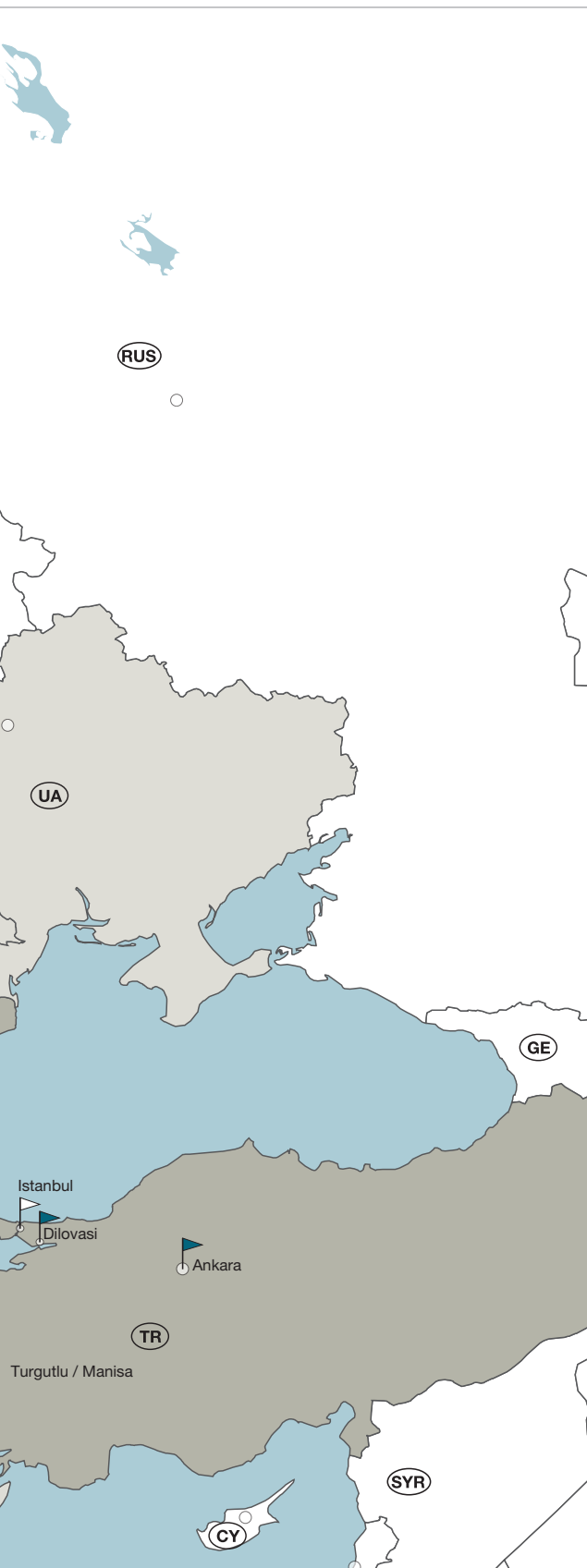
Product Catalogue



- ▶ **Austrotherm XPS®**
- ▶ **Austrotherm UNIPLATTE®**
- ▶ **Austrotherm Impact sound insulation roll**
- ▶ **Austrotherm Resolution®**
- ▶ **Austrotherm Façade Profiles**

Austrotherm International





AUSTRIA

AUSTROTHERM GMBH
WOPFING headquarters and administration
 2754 Waldegg/Wopfing, Austria
 Friedrich Schmid-Straße 165
 Tel.: +43 (0) 2633/401-0
 e-mail: info@austrotherm.at
 www.austrotherm.com

Purbach plant
 7083 Purbach, Industriestraße 1, Austria

Pinkafeld plant
 7423 Pinkafeld, Peter Schmid-Gasse 1, Austria


BOSNIA/HERZEGOVINA

AUSTROTHERM BH D.O.O.
 77000 Bihac, Turija bb, Bosnia and Herzegovina
 Tel.: +387 37 318 401
 Fax: +387 37 318 420
 e-mail: info@austrotherm.ba
 www.austrotherm.ba

AUSTROTHERM BH D.O.O.
 76230 Šamac, Njegoševa bb, Bosnia and Herzegovina


BULGARIA

AUSTROTHERM BULGARIA EOOD
 1532 Sofia, Kazitschene, Industrialna zona, Bulgaria
 Tel.: +359 2 974 64 40, Fax: +359 2 974 64 61
 e-mail: office@austrotherm.bg
 www.austrotherm.bg

Aitos plant
 38500 Aitos, Industrialna zona, Bulgaria


GERMANY

AUSTROTHERM DÄMMSTOFFE GMBH
 19322 Wittenberge, Hirtenweg 15, Germany
 Tel.: +49 3877 5650-610
 e-mail: info@austrotherm.de
 www.austrotherm.de


CROATIA

AUSTROTHERM ZAGREB D.O.O.
 10090 Zagreb, Karažnik 1A, Croatia
 Tel. + 385 1 3794 390
 Fax. + 385 1 3794 389
 e-mail: info@austrotherm.hr
 www.austrotherm.hr


POLAND

AUSTROTHERM SP Z O.O.
 32-600 Oswiecim, ul. Chemikow 1; Poland
 Tel: +48 33 844 70 33-36, Fax: +48 33 844 70 43
 email: info@austrotherm.pl
 www.austrotherm.pl

Skierniewice plant
 96-106 Skierniewice, ul. Fabryczna 80/82, Poland

Grodków plant
 49-200 Grodków, ul. Wroclawska 64, Poland


ROMANIA

AUSTROTHERM COM S.R.L.
 061129 Bukarest, Iuliu Maniu 598, Sector 6, O.P. 76, Romania
 Tel.: +40 21 317 12 27, Fax: +40 21 317 12 31
 e-mail: office@austrotherm.ro
 www.austrotherm.ro

Horia plant
 617245 Horia, Com. Horia, Jud. Neamt, Romania

Calan plant
 335300 Oras Calan, Strada Furnalistului 65, Romania

Arad plant
 310232 Oras Arad, Strada Cornelia Bodea 5-7, Romania


SLOVAKIA

AUSTROTHERM S.R.O.
 83104 Bratislava, Magnetová 11, Slovakia
 Tel.: +42 1 232 661 600, Fax: +42 1 232 661 618
 e-mail: austrotherm@austrotherm.sk
 www.austrotherm.sk


SERBIA

AUSTROTHERM D.O.O.
 14000 Valjevo, Mirka Obradovića bb, Serbia
 Tel.: +381 14 291-310, 291-311, 291-312
 Fax: +381 14 291-313
 e-mail: office@austrotherm.rs
 www.austrotherm.rs

Niš PLANT
 18251 Niš, Mramorsko brdo bb, Serbia

Srbobran plant
 21480 Srbobran, Vrbaški put bb, Serbia

Belgrade sales office
 11030 Beograd, Arčibalda Rajsa 27, Serbia


TURKEY

AUSTROTHERM YALITIM MALZEMELERI San. ve Tic. Ltd. Sti.
 34764 Ümraniye İstanbul
 Sur Yapı Exen İstanbul, Tantavi Mah.Estergon Cad.
 F Blok No:24F Kat:39 D.448, Turkey
 Tel: +90 216 404 10 90, Fax: +90 216 404 10 99
 e-mail: info@austrotherm.com.tr
 www.austrotherm.com.tr

Ankara plant
 06909 Temelli, Sincan/Ankara
 ASO 2 100529 ADA 5. PARSEL, Turkey

Dilovasi plant
 41480 Dilovasi /Kocaeli, Mermeciler Sanayi Sitesi,
 Köşeler Köyü, Merkez mevki,
 37. Cadde, No: 23, Turkey

Turgutlu plant
 45400 Turgutlu / Manisa, Selvi Tepe Mah., Ticaret
 ve Sanayi Odası Bulvarı No: 1, Turkey


CZECH REPUBLIC

AUSTROTHERM CZ S.R.O.
 373 64 Dynín, Dynín 88, Czech republic
 Tel. +420 387 789 011
 e-mail: info@austrotherm.cz
 www.austrotherm.cz

Slavětín plant
 783 24 Slavětín u Litovle, Slavětín 4, Czech republic


HUNGARY

AUSTROTHERM HŐSZIGETELŐANYAG GYÁRTÓ KFT.
 9028 Győr, Fehérvári u.75, Hungary
 Tel.: +36 96 515 110
 Fax: +36 96 412 086
 e-mail: austrotherm@austrotherm.hu
 www.austrotherm.hu

Gyöngyös plant
 3200 Gyöngyös, Déli Külhatár u. 1. Hungary

Szekszárd plant
 7100 Szekszárd, Wopfing utca 3. Hungary

Awards and Memberships

Environment, quality and energy are important for Austrotherm®

Austrotherm is certified according to ISO 50001 (energy), ISO 9001 (quality) and ISO 14001 (environment).

Q mark

The Q mark stands for quality! It's a voluntary certification mark by the Forschungsinstitut für Wärmeschutz – FIW (Research Institute for Thermal Insulation). It certifies Austrotherm XPS® as thermal insulation outside the waterproofing.

-The FPX - Extruded Foam Association

The FPX (Fachvereinigung Extruderschaum e.V.) is the central advisory body and lobby group for the special insulation material XPS. With almost 50 years of experience and combined expertise from production, application and research, it is committed to promoting energy-efficient insulation in dialogue with politicians, the media and the public. The aim is increased awareness and use of standard-compliant insulation materials made of extruded foam.

DGNB – German Sustainable Building Council

The DGNB is Europe's largest network for sustainable building. In 2008, it published a certification system for sustainable buildings and housing complexes for the first time. Here, it's not individual measures that are assessed, but impacts in the overall framework – related to the complete life cycle of a building from planning to deconstruction. Since being founded in 2007, the DGNB has been setting standards for sustainable building together with its members.

BuGG – Bundesverband GebäudeGrün

The Bugg (Bundesverband GebäudeGrün e.V.) is a professional association of around 300 members (as of 2020) for companies and municipal institutions in the field of roof, façade and interior greening. The professional association facilitates an exchange of information between interest groups, assists with funding and works in a practical way.

Austrian Eco-label

For over 30 years, the Austrian Eco-label has been awarded to products that are particularly environmentally friendly compared to competitor products. This makes it a guarantee for the highest environmental standards in production, use and disposal. The Austrotherm XPS® product group is certified. Austrotherm insulation materials are produced entirely free of HBCD, HCFC or CFC.

GPH quality mark “100 % ÖKU – Ecologically harmless plastics”

Thermal insulation products made of EPS that comply with the GPH (Güteschutzverband polystyrene rigid foam) guidelines are labelled with the “100 % ÖKU” quality seal. It guarantees ecologically safe plastics and compliance with the latest national and European environmental requirements.

Austrotherm® is a Climate Alliance company

The Austrotherm Pinkafeld plant has been a Climate Alliance facility since 2014. The electricity used is green electricity from TÜV-certified Austrian hydropower plants. The goals of the Climate Alliance are to reduce greenhouse gas emissions and to preserve the Amazon rainforest.

Continually optimising production in terms of energy and CO₂ savings is a major concern for Austrotherm®.

Quality, environment and energy management system according to ISO

ISO 50001 ensures increased energy efficiency, ISO 14001 guarantees the implementation of even higher environmental protection goals. Austrotherm GmbH has been operating a quality management system in accordance with ISO 9001 since 1998 and therefore ensures the highest quality in its processes.

Austrian Model Plant Quality Mark

The Austria Quality Seal for the Austrian Model Plant was awarded to Austrotherm® by the OQA – the Austrian Working Group for the Promotion of Quality. Businesses with this quality mark prove that they provide extraordinary services in the area of quality.

National Coat of Arms of the Republic of Austria

As early as 1995, Austrotherm® was awarded the national coat of arms of the Republic of Austria for the outstanding quality of its products and its services to the Austrian economy. The state award is presented to companies that have a leading position in their industry. Austrotherm® has also carried the Burgenland coat of arms since 1993.



Austrotherm XPS®

Pages 10 – 22

Thermal insulation with maximum pressure resistance

Energy-saving thermal insulation from the cellar to the Roof: This pink insulating material perfectly fulfils all requirements. The extruded polystyrene rigid foam, XPS for short, offers the ideal solution for a wide range of applications.

The outstanding properties of Austrotherm XPS® come into play especially when high demands are placed on the insulation by extreme pressure and humidity, such as on insulation beneath floor plates, on perimeter and base insulation, on flat roof insulation, beneath foundation plates or in humid areas.

Austrotherm XPS® Premium 30 SF	10
Austrotherm XPS® Premium P	11
Austrotherm XPS® PLUS 30 SF	12
Austrotherm XPS® PLUS P	13
Austrotherm XPS® TOP 30	14
Austrotherm XPS® TOP P	15
Austrotherm XPS® TOP 50 SF	16
Austrotherm XPS® TOP 70 SF	17
Austrotherm XPS® TOP Drain	18
Austrotherm WA Inverted Roof Fleece	18
Austrotherm XPS® TOP 30 GK (smooth surface)	19
Austrotherm Universal Construction Board	19
Austrotherm Foundation Plate Insulating System	20
Application areas of Austrotherm XPS®	21
Austrotherm XPS® palletising	21
Special & Industrial Applications of Austrotherm XPS®	22

Austrotherm UNIPLATTE®

Page 24 – 25

Countless design options

The Austrotherm UNIPLATTE® board is a perfect support element, made of pink extruded polystyrene rigid foam, coated with a synthetic resin modified mortar and reinforced with a glass fibre net on both sides. Austrotherm UNIPLATTE® is waterproof, heat-insulating and robust. It is particularly suited as a substrate for laying tiles using the thin bed method.

Austrotherm UNIPLATTE®	24
Austrotherm UNIPLATTE® Bathtub element	24
Austrotherm UNIPLATTE® L-/U-shaped board	25
Palletising of Austrotherm UNIPLATTE® boards	25

Austrotherm Impact sound insulation roll

Page 26 – 27

Thermal and impact sound insulation

Impact sound rollers made of expanded polystyrene rigid foam with laminated fabric or aluminium foil

Austrotherm Impact sound insulation roll	26
Austrotherm Impact sound insulation roll PLUS	27

Austrotherm Resolution®

Pages 28–29

High-performance insulation material for tight spaces

Over recent years, the Austrotherm® Development department has been conducting research to achieve the lowest thermal insulation value with the thinnest insulation thickness. The reduction in space will free up valuable square metres, which will help to significantly increase the value of the property.

Austrotherm Resolution®	29
Austrotherm Resolution® Boden	29
Austrotherm Resolution® Fassade	29
Austrotherm Resolution® Flachdach	29

Austrotherm façade profiles

Pages 30–37

Classical and modern façade design

Austrotherm® is a specialist in historical replicas, and has developed many profile versions for elegant façade design. Residential and functional buildings can now have a charismatic exterior thanks to developments in modern aesthetics and façade profiles. Austrotherm® produces made-to-measure modern profiles and enables innovative façades that are guaranteed to attract attention.

Austrotherm window and door frames	31
Austrotherm design element	32
Austrotherm keystones, ashlar elements	32
Austrotherm sills, fascia profiles	33
Austrotherm window sill connection profile	34
Austrotherm frame insulating element	34
Austrotherm cornices	35
Austrotherm decorative elements	36
Austrotherm groove profile	36
Austrotherm TOP coating compound	37
Austrotherm PU butt joint adhesive	37
Austrotherm additional work	37
Austrotherm parapet element	37

Austrotherm Service

Pages 38 – 43

Austrotherm International	2
Austrotherm XPS® – Technical data	38
Austrotherm UNIPLATTE® – Technical data	40
General Terms and Conditions	42

Austrotherm insulating materials

Thermal insulation from the cellar to the roof!



Insulation of the interior cellar wall = perimeter insulation



Insulation on flat roofs



Insulation underneath the Floor plate



Base insulation



Insulation of the interior cellar wall



Insulation for wet rooms and on dividing walls



Façade insulation



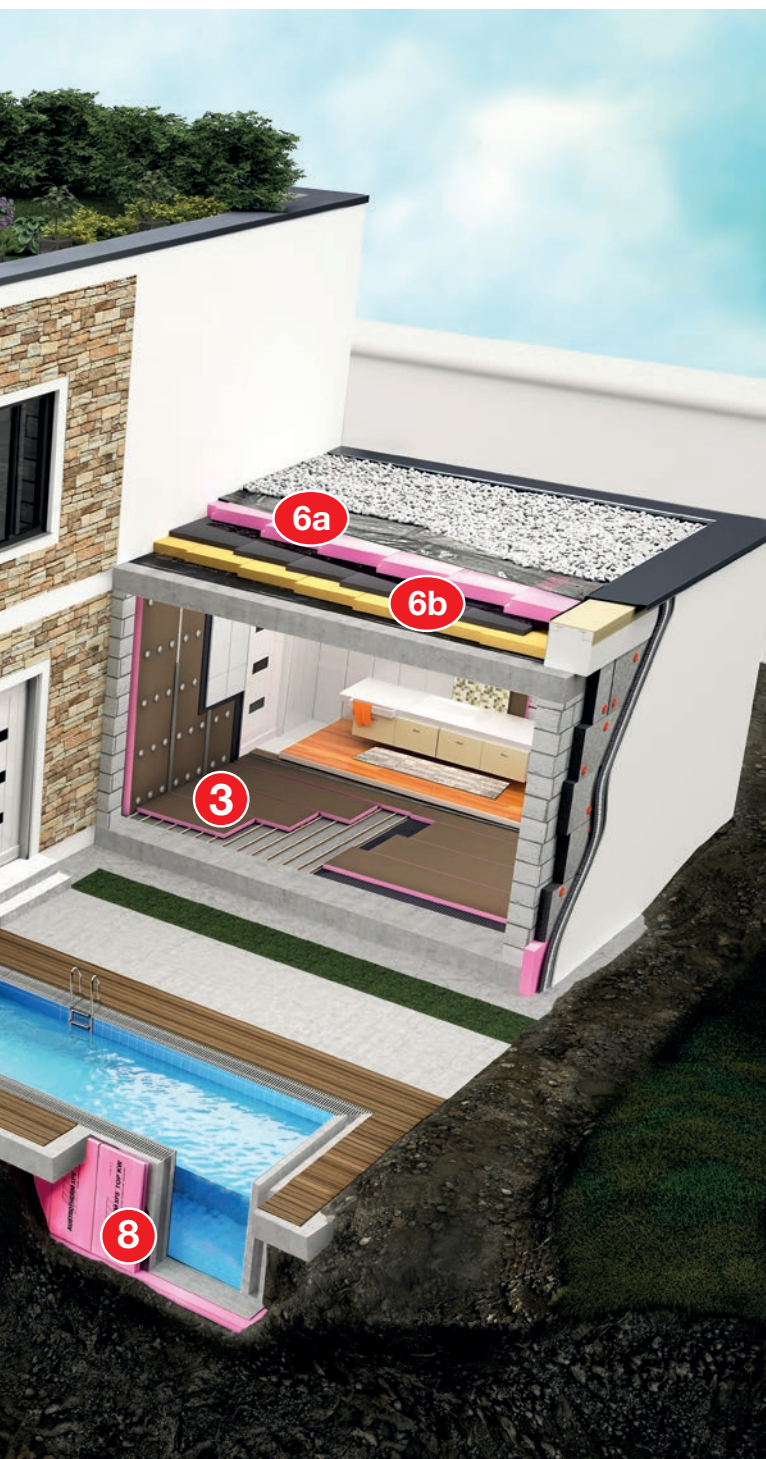
Insulation of window and door jambs



Floor insulation



Above-rafter insulation



1 Floor insulation:	
Austrotherm Resolution® Boden	31
2 Impact sound insulation:	
Austrotherm Impact sound insulation roll PLUS	34
Austrotherm Impact sound insulation roll	46
3 Sanitary area:	
Austrotherm UNIPLATTE®	26
4 Roof seal:	
Austrotherm parapet element	39
5 Façade insulation:	
5a Austrotherm Resolution® Fassade	31
5b Austrotherm XPS® PLUS Edging strip	23
6 Flat roof:	
6a Austrotherm XPS® Premium 30 SF	12
Austrotherm XPS® PLUS 30 SF	14
Austrotherm XPS® TOP 30 SF	16
Austrotherm XPS® TOP 30 TB SF	16
Austrotherm XPS® TOP 50 SF	18
Austrotherm XPS® TOP 50 TB SF	18
Austrotherm XPS® TOP 70 SF	19
Austrotherm XPS® TOP 70 TB SF	19
6b Austrotherm Resolution® Flachdach	31
7 Underneath the foundation plate/ interior cellar insulation:	
Austrotherm XPS® TOP 50 SF	18
Austrotherm XPS® TOP 50 TB SF	18
Austrotherm XPS® TOP 70 SF	19
Austrotherm XPS® TOP 70 TB SF	19
Austrotherm Foundation Plate Insulating System	22
8 Base insulation:	
Austrotherm XPS® Premium P	13
Austrotherm XPS® PLUS P	15
Austrotherm XPS® TOP P GK	17
Austrotherm XPS® TOP P TB GK	17
Austrotherm XPS® PLUS Masonry barrier film insulation	23
9 Exterior cellar insulation:	
Austrotherm XPS® Premium 30 SF	12
Austrotherm XPS® PLUS 30 SF	14
Austrotherm XPS® TOP 30 SF	16
Austrotherm XPS® TOP 30 TB SF	16
Austrotherm XPS® TOP Drain	20
Austrotherm XPS® TOP 50 SF	18
Austrotherm XPS® TOP 50 TB SF	18
Austrotherm XPS® TOP 70 SF	19
Austrotherm XPS® TOP 70 TB SF	19
Austrotherm XPS® TOP KW	22
9 Window and façade design:	
Austrotherm façade profiles	32

Austrotherm XPS®

Perfect insulation from the basement to the roof.



Do you want to save energy costs and reduce emissions while still protecting the climate? And all this under high pressure and in damp conditions? If so, then the pink Austrotherm XPS® is the right choice for you. Whether in inverted roofs, perimeter areas, on façades or bases, Austrotherm XPS® insulating boards can withstand various stresses and loads. Resistance to moisture, resistance to alternating frost-thaw cycles, mechanical resistance, resistance to rotting and resistance to roots are only some of the advantageous characteristics of this multifunctional product.

In the sector of XPS insulating boards, Austrotherm® has the widest range of products on the market and can therefore meet all different needs and requirements.



The best products for bases

Bases are another strong point for Austrotherm®: Austrotherm XPS® Premium P and Austrotherm XPS® PLUS P are now ensuring the best possible insulation for base areas. Both consist of the well-established Austrotherm XPS® and feature an embossed surface: While only a product with a smooth surface is usually suitable for perimeter insulation, above ground level an embossed board is perfect from a

design point of view: The plaster adheres well to the rough texture. And what really matters: Both products boast outstanding thermal insulation values.

Austrotherm XPS® in larger thicknesses

Austrotherm® produces XPS insulating boards up to 400 mm thick using a new thermobonding method. This means the thicker insulating boards necessary to keep energy levels low can be easily achieved for use in cellar and flat roof insulation. With a nominal thermal conductivity value λ_D of 0.032 W/(mK) for Austrotherm XPS® PLUS and 0.027W/(mK) for Austrotherm XPS® Premium, the thick boards have a good insulating effect.

Safe insulation in double-shell masonry

Core insulation has proven successful as an insulation method in double-skin masonry. That being said though, there are also neuralgic points with this variant. This includes thermal bridges at window reveals and door openings, as well as rising damp in the base area of the cavity. The XPS® PLUS wall edging strip and XPS® PLUS masonry barrier film insulation products from Austrotherm are applied precisely at these points and ensure straightforward execution including excellent thermal insulation.



Benefits of Austrotherm XPS®

- ▶ Outstanding thermal insulation
- ▶ High mechanical strength
- ▶ Closed cell structure
- ▶ Good resistance to ageing
- ▶ Low environmental impact
- ▶ Easy to work with

Problem solver in the case of seepage or surface water

Austrotherm expands its product range and offers Austrotherm XPS® TOP Drain, a problem solver for perimeter insulation including drainage. Thanks to longitudinal grooves and a filter fleece, the compression-resistant thermal insulation board made of extruded foam safely carries surface water and seepage water along the outer basement wall to the drainage below the base.

Whether you have a green inverted roof, a perimeter outer wall or the load-bearing floor slab – Austrotherm® can offer you the perfect insulation!

You can see how to process our insulation materials quickly and easily in our step-by-step instructions in our Austrotherm XPS® processing videos and the associated brochures:



Designation key using XPS-G 30 as an example:

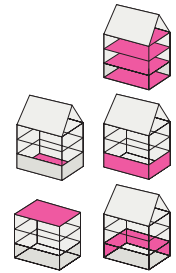


Austrotherm XPS® Premium 30 SF

Waterproof, pressure-resistant insulating board made of extruded polystyrene rigid foam **with shiplap** offering maximum thermal insulation.



Product type: according to EN 13164: XPS
 Application area: acc. to DIN 4108-10: DUK, DI, DEO, WAB, WZ, WI, PW, PB
 Compressive strength: dh
 Edge shape: Shiplap (SF)
 Colour: Pink
 Effective dimensions: 1250 x 600 mm
 Effective area: 0.75 m² per board
 Pressure resistance: ≥ 300 kPa (≥ 30 t/m²)
 Board format: 1265 x 615 mm



- ▶ Exterior cellar wall
- ▶ Above and underneath the floor plate
- ▶ In inverted roofs, terrace roofs and parking decks
- ▶ In plus roofs or duo roofs
- ▶ In wet areas

EAN no. 9007646...	Item no.	m ² per pack	m ³ per pack	m ³ per pallet	Parts per pack	Packs per pallet	Thickness in mm	Thermal conductivity λ _D W/(mK)
108337	XGSFPRM30 040	7.50	0.300	3.600	10	12	▶ 40	0.027
108344	XGSFPRM30 050	6.00	0.300	3.600	8	12	▶ 50	
108351	XGSFPRM30 060	5.25	0.315	3.780	7	12	▶ 60	
108382	XGSFPRM30 080	3.75	0.300	3.600	5	12	▶ 80	
108399	XGSFPRM30 100	3.00	0.300	3.600	4	12	▶ 100	
109990	XGSFPRM30 120	3.00	0.360	3.600	4	10	▶ 120	
110002	XGSFPRM30 140	2.25	0.315	3.780	3	12	▶ 140	
110019	XGSFPRM30 160	2.25	0.360	3.600	3	10	▶ 160	
110026	XGSFPRM30 180	1.50	0.270	3.780	2	14	▶ 180	
110033	XGSFPRM30 200	1.50	0.300	3.600	2	12	▶ 200	
110040	XGSFPRM30 220	1.50	0.330	3.300	2	10	▶ 220	
110057	XGSFPRM30 240	1.50	0.360	3.600	2	10	▶ 240	
108429	XGSFPRM30 260	1.50	0.390	3.900	2	10	▶ 260	
110071	XGSFPRM30 280	0.75	0.210	3.780	1	18	▶ 280	
108412	XGSFPRM30 300	0.75	0.225	3.600	1	16	▶ 300	
110095	XGSFPRM30 320	0.75	0.240	3.840	1	16	▶ 320	
108443	XGSFPRM30 340	0.75	0.255	3.570	1	14	▶ 340	
110118	XGSFPRM30 360	0.75	0.270	3.780	1	14	▶ 360	
110125	XGSFPRM30 380	0.75	0.285	3.420	1	12	▶ 380	
110132	XGSFPRM30 400	0.75	0.300	3.600	1	12	▶ 400	

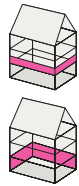
- ▶ Delivery period on request.

Austrotherm XPS® Premium P

Waterproof, pressure-resistant insulating board made of extruded polystyrene rigid foam **with embossed surface** offering maximum thermal insulation.



Product type:	according to EN 13164: XPS (embossed surface)
Application area according to DIN 4108-10:	WI, WAS, DI, WAB, WZ
Edge shape:	Straight edge
Colour:	Pink
Effective dimensions:	1250 x 600 mm
Effective area:	0.75 m ² per board
Pressure resistance:	≥ 300 kPa (≥ 30 t/m ²)
Board format:	1250 x 600 mm



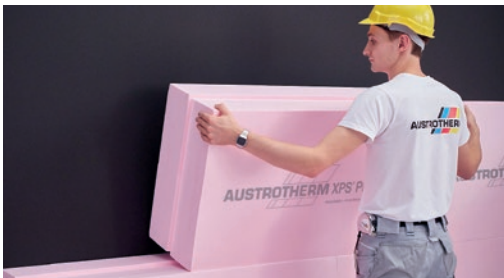
- ▶ Base insulation
- ▶ Thermal bridge insulation
- ▶ Inside surfaces of walls

EAN no. 9007646...	Item No.	m ² per pack	m ³ per pack	m ³ per pallet	Parts per pack	Packs per pallet	Thickness in mm	Thermal conductivity λ _D W/(mK)
110453	XPGKPRM 080	3.75	0.300	3.600	5	12	▶ 80	0.027
110460	XPGKPRM 100	3.00	0.300	3.600	4	12	▶ 100	
110477	XPGKPRM 120	3.00	0.360	3.600	4	10	▶ 120	
110484	XPGKPRM 140	2.25	0.315	3.780	3	12	▶ 140	
110491	XPGKPRM 160	2.25	0.360	3.600	3	10	▶ 160	
110507	XPGKPRM 180	1.50	0.270	3.780	2	14	▶ 180	
110514	XPGKPRM 200	1.50	0.300	3.600	2	12	▶ 200	
110521	XPGKPRM 220	1.50	0.330	3.300	2	10	▶ 220	
110538	XPGKPRM 240	1.50	0.360	3.600	2	10	▶ 240	
110545	XPGKPRM 260	1.50	0.390	3.900	2	10	▶ 260	
110552	XPGKPRM 280	0.75	0.210	3.780	1	18	▶ 280	
110569	XPGKPRM 300	0.75	0.225	3.600	1	16	▶ 300	
110576	XPGKPRM 320	0.75	0.240	3.840	1	16	▶ 320	
110583	XPGKPRM 340	0.75	0.255	3.570	1	14	▶ 340	
110590	XPGKPRM 360	0.75	0.270	3.780	1	14	▶ 360	
110606	XPGKPRM 380	0.75	0.285	3.420	1	12	▶ 380	
110613	XPGKPRM 400	0.75	0.300	3.600	1	12	▶ 400	

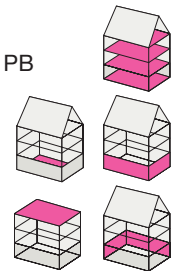
- ▶ Delivery period on request.

Austrotherm XPS® PLUS 30 SF

Waterproof, pressure-resistant insulating board made of extruded polystyrene rigid foam **with shiplap** offering maximum thermal insulation.



Product type: according to EN 13164: XPS
 Application area: DUK, DI, DEO, WAB, WZ, WI, PW, PB
 acc. to DIN 4108-10: dh
 Compressive strength: Shiplap (SF)
 Edge shape: Pink
 Colour: Pink
 Effective dimensions: 1250 x 600 mm
 Effective area: 0.75 m² per board
 Pressure resistance: ≥ 300 kPa (≥ 30 t/m²)
 Board format: 1265 x 615 mm



- ▶ Exterior cellar wall
- ▶ Above and underneath the floor plate
- ▶ In inverted roofs, terrace roofs and parking decks
- ▶ In plus roofs or duo roofs
- ▶ In wet areas

EAN no. 9007646...	Item No.	m ² per pack	m ³ per pack	m ³ per pallet	Parts per pack	Packs per pallet	Thickness in mm	Thermal con- ductivity λ _D W/(mK)
108870	XGSFPLUS30 080	3.75	0.300	3.600	5	12	▶ 80	0.032
108887	XGSFPLUS30 100	3.00	0.300	3.600	4	12	▶ 100	
108894	XGSFPLUS30 120	3.00	0.360	3.600	4	10	▶ 120	
108900	XGSFPLUS30 140	2.25	0.315	3.780	3	12	▶ 140	
108917	XGSFPLUS30 160	2.25	0.360	3.600	3	10	▶ 160	
108924	XGSFPLUS30 180	1.50	0.270	3.780	2	14	▶ 180	
108931	XGSFPLUS30 200	1.50	0.300	3.600	2	12	▶ 200	
110224	XGSFPLUS30 220	1.50	0.330	3.300	2	10	▶ 220	
110231	XGSFPLUS30 240	1.50	0.360	3.600	2	10	▶ 240	
108863	XGSFPLUS30 260	1.50	0.390	3.900	2	10	▶ 260	
109051	XGSFPLUS30 280	0.75	0.210	3.780	1	18	▶ 280	
110262	XGSFPLUS30 300	0.75	0.225	3.600	1	16	▶ 300	
099413	XGSFPLUS30 320	0.75	0.240	3.840	1	16	▶ 320	
110286	XGSFPLUS30 340	0.75	0.255	3.570	1	14	▶ 340	
099420	XGSFPLUS30 360	0.75	0.270	3.780	1	14	▶ 360	
099437	XGSFPLUS30 380	0.75	0.285	3.420	1	12	▶ 380	
110316	XGSFPLUS30 400	0.75	0.300	3.600	1	12	▶ 400	

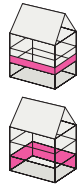
▶ Delivery period on request.

Austrotherm XPS® PLUS P

Waterproof, pressure-resistant insulating board made of extruded polystyrene rigid foam **with embossed surface** offering maximum thermal insulation.



Product type:	according to EN 13164: XPS (embossed surface)
Application area according to DIN 4108-10:	WAB, WZ, WI, WAS
Edge shape:	Straight edge
Colour:	Pink
Effective dimensions:	1250 x 600 mm
Effective area:	0.75 m ² per board
Pressure resistance:	≥ 300 kPa (≥ 30 t/m ²)
Board format:	1250 x 600 mm



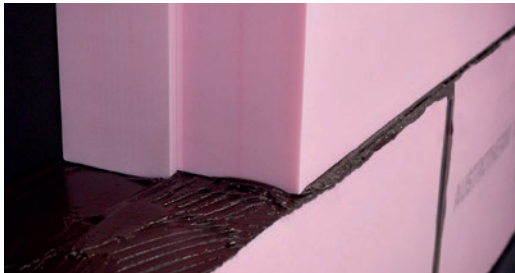
- ▶ Base insulation
- ▶ Thermal bridge insulation
- ▶ Inside surfaces of walls

EAN no. 9007646...	Item No.	m ² per pack	m ³ per pack	m ³ per pallet	Parts per pack	Packs per pallet	Thickness in mm	Thermal conductivity λ _D W/(mK)
110712	XPGKPLUS 080	3.75	0.300	3.600	5	12	▶ 80	0.032
110729	XPGKPLUS 100	3.00	0.300	3.600	4	12	▶ 100	
110736	XPGKPLUS 120	3.00	0.360	3.600	4	10	▶ 120	
110743	XPGKPLUS 140	2.25	0.315	3.780	3	12	▶ 140	
110750	XPGKPLUS 160	2.25	0.360	3.600	3	10	▶ 160	
110767	XPGKPLUS 180	1.50	0.270	3.780	2	14	▶ 180	
110774	XPGKPLUS 200	1.50	0.300	3.600	2	12	▶ 200	
110781	XPGKPLUS 220	1.50	0.330	3.300	2	10	▶ 220	
110798	XPGKPLUS 240	1.50	0.360	3.600	2	10	▶ 240	
110804	XPGKPLUS 260	1.50	0.390	3.900	2	10	▶ 260	
110811	XPGKPLUS 280	0.75	0.210	3.780	1	18	▶ 280	
110828	XPGKPLUS 300	0.75	0.225	3.600	1	16	▶ 300	
110835	XPGKPLUS 320	0.75	0.240	3.840	1	16	▶ 320	
110842	XPGKPLUS 340	0.75	0.255	3.570	1	14	▶ 340	
110859	XPGKPLUS 360	0.75	0.270	3.780	1	14	▶ 360	
110866	XPGKPLUS 380	0.75	0.285	3.420	1	12	▶ 380	
110873	XPGKPLUS 400	0.75	0.300	3.600	1	12	▶ 400	

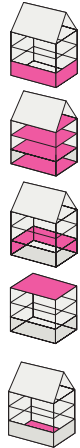
- ▶ Delivery period on request.

Austrotherm XPS® TOP 30 SF

Pressure-resistant thermal insulating board made of extruded polystyrene rigid foam, **with shiplap**.



Product type:	according to EN 13164: XPS
Application area:	acc. to DIN 4108-10: DAD, DAA, DUK, DI, DEO, WAB, WZ, WI, PW, PB
Compressive strength:	dh
Edge shape:	Shiplap (SF)
Colour:	Pink
Effective dimensions:	1250 x 600 mm
Effective area:	0.75 m ² per board
Pressure resistance:	≥ 300 kPa (≥ 30 t/m ²)
Board format:	1265 x 615 mm



- ▶ Exterior cellar wall
- ▶ Above and underneath the floor plate
- ▶ In inverted roofs, terrace roofs and parking decks
- ▶ In wet areas, plus roofs or duo roofs
- ▶ Core insulation

Austrotherm XPS® TOP 30 SF up to 200 mm

Pressure-resistant thermal insulating board made of extruded polystyrene rigid foam, **with shiplap**.

Austrotherm XPS® TOP 30 TB SF from 140 mm

Pressure-resistant thermal insulating board **with improved thermal insulating properties** made of extruded polystyrene rigid foam using the thermobonding method, **with smooth surface and shiplap**.

EAN no. 9007646...	Item No.	m ² per pack	m ³ per pack	m ³ per pallet	Parts per pack	Packs per pallet	Thickness in mm	Thermal con- ductivity λ _D W/(mK)
Austrotherm XPS® TOP 30 SF								
101802	XGSFTOP30 030	10.50	0.315	3.780	14	12	30	0.033
101819	XGSFTOP30 040	7.50	0.300	3.600	10	12	40	0.032
101826	XGSFTOP30 050	6.00	0.300	3.600	8	12	50	
101833	XGSFTOP30 060	5.25	0.315	3.780	7	12	60	0.033
101840	XGSFTOP30 070	4.50	0.315	3.780	6	12	▶ 70	0.035
101857	XGSFTOP30 080	3.75	0.300	3.600	5	12	80	
101864	XGSFTOP30 100	3.00	0.300	3.600	4	12	100	
101871	XGSFTOP30 120	3.00	0.360	3.600	4	10	120	
101888	XGSFTOP30 140	2.25	0.315	3.780	3	12	140	0.036
101895	XGSFTOP30 160	2.25	0.360	3.600	3	10	160	
101901	XGSFTOP30 180	1.50	0.270	3.780	2	14	180	0.037
101918	XGSFTOP30 200	1.50	0.300	3.600	2	12	200	
Austrotherm XPS® TOP 30 TB SF								
108467	XGSFTOP30TB 140	2.25	0.315	3.780	3	12	140	0.035
108450	XGSFTOP30TB 160	2.25	0.360	3.600	3	10	160	
108504	XGSFTOP30TB 180	1.50	0.270	3.780	2	14	180	
109181	XGSFTOP30TB 200	1.50	0.300	3.600	2	12	200	
110910	XGSFTOP30TB 220	1.50	0.330	3.300	2	10	220	
109174	XGSFTOP30TB 240	1.50	0.360	3.600	2	10	240	
108566	XGSFTOP30TB 260	1.50	0.390	3.900	2	10	▶ 260	
108573	XGSFTOP30TB 280	0.75	0.210	3.780	1	18	▶ 280	
108580	XGSFTOP30TB 300	0.75	0.225	3.600	1	16	▶ 300	
108597	XGSFTOP30TB 320	0.75	0.240	3.840	1	16	▶ 320	
108603	XGSFTOP30TB 340	0.75	0.255	3.570	1	14	▶ 340	
108610	XGSFTOP30TB 360	0.75	0.270	3.780	1	14	▶ 360	
108627	XGSFTOP30TB 380	0.75	0.285	3.420	1	12	▶ 380	
108634	XGSFTOP30TB 400	0.75	0.300	3.600	1	12	▶ 400	

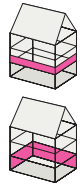
▶ Delivery period on request.

Austrotherm XPS® TOP P

Pressure-resistant thermal insulating board made of extruded polystyrene rigid foam, **with embossed surface and straight edge.**



Product type: according to EN 13164: XPS (embossed surface)
 Application area: according to DIN 4108-10: WAS, WI, DI, WAB, WZ
 Edge shape: Straight edge
 Colour: Pink
 Effective dimensions: 1250 x 600 mm
 Effective area: 0.75 m² per board
 Pressure resistance (thickness from 50 mm): ≥ 300 kPa (≥ 30 t/m²)
 Board format: 1250 x 600 mm



- ▶ Base insulation
- ▶ Thermal bridge insulation
- ▶ Wall interior

Austrotherm XPS® TOP P GK up to 160 mm

Pressure-resistant thermal insulating board made of extruded polystyrene rigid foam, **with embossed surface and straight edge.**

Austrotherm XPS® TOP P TB GK from 140 mm

Pressure-resistant thermal insulating board **with improved thermal insulating properties** made of extruded polystyrene rigid foam using the thermobonding method, **with embossed surface and straight edge.**

EAN no. 9007646...	Item No.	m ² per pack	m ³ per pack	m ³ per pallet	Parts per pack	Packs per pallet	Thickness in mm	Thermal conductivity λ _D W/(mK)
Austrotherm XPS® TOP P GK								
104209	XPGKTOP 030	10.50	0.315	3.780	14	12	30	0.033
104216	XPGKTOP 040	7.50	0.300	3.600	10	12	40	
104223	XPGKTOP 050	6.00	0.300	3.600	8	12	50	
104230	XPGKTOP 060	5.25	0.315	3.780	7	12	60	
104308	XPGKTOP 070	4.50	0.315	3.780	6	12	▶ 70	0.035
104247	XPGKTOP 080	3.75	0.300	3.600	5	12	80	
104254	XPGKTOP 100	3.00	0.300	3.600	4	12	100	0.036
104261	XPGKTOP 120	3.00	0.360	3.600	4	10	120	
104278	XPGKTOP 140	2.25	0.315	3.780	3	12	140	
104285	XPGKTOP 160	2.25	0.360	3.600	3	10	160	
Austrotherm XPS® TOP P TB GK								
108474	XPGKTOPTB 140	2.25	0.315	3.780	3	12	140	0.035
108481	XPGKTOPTB 160	2.25	0.360	3.600	3	10	160	
108498	XPGKTOPTB 180	1.50	0.270	3.780	2	14	180	
108641	XPGKTOPTB 200	1.50	0.300	3.600	2	12	200	
108658	XPGKTOPTB 220	1.50	0.330	3.300	2	10	220	
108665	XPGKTOPTB 240	1.50	0.360	3.600	2	10	240	
108672	XPGKTOPTB 260	1.50	0.390	3.900	2	10	▶ 260	
108689	XPGKTOPTB 280	0.75	0.210	3.780	1	18	▶ 280	
108696	XPGKTOPTB 300	0.75	0.225	3.600	1	16	▶ 300	
108702	XPGKTOPTB 320	0.75	0.240	3.840	1	16	▶ 320	
108719	XPGKTOPTB 340	0.75	0.255	3.570	1	14	▶ 340	
108726	XPGKTOPTB 360	0.75	0.270	3.780	1	14	▶ 360	
108733	XPGKTOPTB 380	0.75	0.285	3.420	1	12	▶ 380	
108740	XPGKTOPTB 400	0.75	0.300	3.600	1	12	▶ 400	

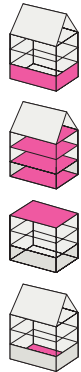
- ▶ Delivery period on request.

Austrotherm XPS® TOP 50 SF

Thermal insulating board made of extruded polystyrene rigid foam for high compressive strength.



Product type: according to EN 13164: XPS
 Application area: acc. to DIN 4108-10: DUK, DI, DEO, WAB, WZ, WI, PW, PB
 Compressive strength: ds
 Edge shape: Shiplap (SF)
 Colour: Pink
 Effective dimensions: 1250 x 600 mm
 Effective area: 0.75 m² per board
 Pressure resistance: ≥ 500 kPa (≥ 50 t/m²)
 Board format: 1265 x 615 mm



- ▶ Exterior cellar wall
- ▶ Underneath the floor plate
- ▶ In inverted roofs, terrace roofs and parking decks
- ▶ Industrial floors, railway and road construction, artificial ice rink, fruit cellar

Austrotherm XPS® TOP 50 SF up to 200 mm

Thermal insulating board made of extruded polystyrene rigid foam for high compressive strength, **with shiplap**.

Austrotherm XPS® TOP 50 TB SF from 140 mm

Thermal insulating board **with improved thermal insulating properties** made of extruded polystyrene rigid foam using the thermobonding method, **with smooth surface and stepped profile**.

EAN no. 9007646...	Item No.	m ² per pack	m ³ per pack	m ³ per pallet	Parts per pack	Packs per pallet	Thickness in mm	Thermal conductivity λ _D W/(mK)
Austrotherm XPS® Top 50 SF								
105190	XGSFTOP50 040	7.50	0.300	3.600	10	12	▶ 40	0.033
105206	XGSFTOP50 050	6.00	0.300	3.600	8	12	50	
105213	XGSFTOP50 060	5.25	0.315	3.780	7	12	60	
105220	XGSFTOP50 080	3.75	0.300	3.600	5	12	80	0.035
105237	XGSFTOP50 100	3.00	0.300	3.600	4	12	100	
105244	XGSFTOP50 120	3.00	0.360	3.600	4	10	120	
105251	XGSFTOP50 140	2.25	0.315	3.780	3	12	140	0.036
105268	XGSFTOP50 160	2.25	0.360	3.600	3	10	160	
105275	XGSFTOP50 180	1.50	0.270	3.780	2	14	180	0.037
105282	XGSFTOP50 200	1.50	0.300	3.600	2	12	200	
Austrotherm XPS® TOP 50 TB SF								
109099	XGSFTOP50TB 140	2.25	0.315	3.780	3	12	140	0.035
109068	XGSFTOP50TB 160	2.25	0.360	3.600	3	10	160	
109075	XGSFTOP50TB 180	1.50	0.270	3.780	2	14	180	
109082	XGSFTOP50TB 200	1.50	0.300	3.600	2	12	200	
110927	XGSFTOP50TB 220	1.50	0.330	3.300	2	10	▶ 220	
110934	XGSFTOP50TB 240	1.50	0.360	3.600	2	10	▶ 240	
108788	XGSFTOP50TB 260	1.50	0.390	3.900	2	10	▶ 260	
108795	XGSFTOP50TB 280	0.75	0.210	3.780	1	18	▶ 280	
108801	XGSFTOP50TB 300	0.75	0.225	3.600	1	16	▶ 300	
108818	XGSFTOP50TB 320	0.75	0.240	3.840	1	16	▶ 320	
108825	XGSFTOP50TB 340	0.75	0.255	3.570	1	14	▶ 340	
108832	XGSFTOP50TB 360	0.75	0.270	3.780	1	14	▶ 360	
108849	XGSFTOP50TB 380	0.75	0.285	3.420	1	12	▶ 380	
108856	XGSFTOP50TB 400	0.75	0.300	3.600	1	12	▶ 400	

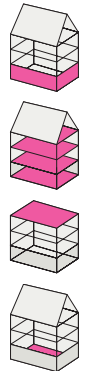
▶ Delivery period on request.

Austrotherm XPS® TOP 70 SF

Thermal insulating board made of extruded polystyrene rigid foam for maximum compressive strength.



Product type:	according to EN 13164: XPS
Application area:	
acc. to DIN 4108-10:	DUK, DI, DEO, WAB, WZ, WI, PW, PB
Compressive strength:	dx
Edge shape:	Shi lap (SF)
Colour:	Pink
Effective dimensions:	1250 x 600 mm
Effective area:	0.75 m ² per board
Pressure resistance:	≥ 700 kPa (≥ 70 t/m ²)
Board format:	1265 x 615 mm



- ▶ Underneath the floor plate
- ▶ In inverted roofs, parking decks
- ▶ Industrial floors, railway and road construction, artificial ice rink, fruit cellar, airfields

Austrotherm XPS® TOP 70 SF up to 200 mm

Thermal insulating board made of extruded polystyrene rigid foam for maximum compressive strength, **with shi lap**.

Austrotherm XPS® TOP 70 TB SF from 140 mm

Thermal insulating board **with improved thermal insulating properties** made of extruded polystyrene rigid foam using the thermobonding method, **with smooth surface and stepped profile**.

EAN no. 9007646...	Item No.	m ² per pack	m ³ per pack	m ³ per pallet	Parts per pack	Packs per pallet	Thickness in mm	Thermal conductivity λ _D W/(mK)
Austrotherm XPS® TOP 70 SF								
106142	XGSFTOP70 050	6.00	0.300	3.600	8	12	50	0.033
106159	XGSFTOP70 060	5.25	0.315	3.780	7	12	60	
106166	XGSFTOP70 080	3.75	0.300	3.600	5	12	80	0.035
106173	XGSFTOP70 100	3.00	0.300	3.600	4	12	100	
106180	XGSFTOP70 120	3.00	0.360	3.600	4	10	120	
106197	XGSFTOP70 140	2.25	0.315	3.780	3	12	140	
106203	XGSFTOP70 160	2.25	0.360	3.600	3	10	160	0.036
105336	XGSFTOP70 180	1.50	0.270	3.780	2	14	▶ 180	0.037
106227	XGSFTOP70 200	1.50	0.300	3.600	2	12	▶ 200	
Austrotherm XPS® TOP 70 TB SF								
109150	XGSFTOP70TB 140	2.25	0.315	3.780	3	12	▶ 140	0.035
109167	XGSFTOP70TB 160	2.25	0.360	3.600	3	10	▶ 160	
109143	XGSFTOP70TB 180	1.50	0.270	3.780	2	14	▶ 180	
108948	XGSFTOP70TB 200	1.50	0.300	3.600	2	12	▶ 200	
108955	XGSFTOP70TB 220	1.50	0.330	3.300	2	10	▶ 220	
108962	XGSFTOP70TB 240	1.50	0.360	3.600	2	10	▶ 240	
108979	XGSFTOP70TB 260	1.50	0.390	3.900	2	10	▶ 260	
108986	XGSFTOP70TB 280	0.75	0.210	3.780	1	18	▶ 280	
108993	XGSFTOP70TB 300	0.75	0.225	3.600	1	16	▶ 300	
109006	XGSFTOP70TB 320	0.75	0.240	3.840	1	16	▶ 320	
109013	XGSFTOP70TB 340	0.75	0.255	3.570	1	14	▶ 340	
109020	XGSFTOP70TB 360	0.75	0.270	3.780	1	14	▶ 360	
109037	XGSFTOP70TB 380	0.75	0.285	3.420	1	12	▶ 380	
109044	XGSFTOP70TB 400	0.75	0.300	3.600	1	12	▶ 400	

- ▶ Delivery period on request.

Austrotherm XPS® TOP Drain

Pressure-resistant thermal insulating board made of extruded polystyrene rigid foam with stepped profile, with linear grooves and filter fleece, for perimeter insulation and drainage.



▶ Exterior cellar wall

- ▶ Mostly waterproof
- ▶ Best ecological properties
- ▶ Outstanding thermal insulation
- ▶ Ideal for subsidised housing
- ▶ Perimeter insulation and drainage

Product type: according to EN 13164: XPS
Produced from Austrotherm XPS® TOP 30

Edge shape: Stepped profile (SF)

Colour: Pink

Effective dimensions: 1250 x 600 mm

Effective area: 0.75m² per board

Compressive strength: at 10% deformation,
300 kPa (30 t/m²)
≥ 300 kPa

Board format: 1265 x 615 mm

Surface: Smooth/groove and fleece

EAN no. 9007646...	Item No.	m ² per pal.	m ³ per pal.	Parts per pal.	Thickness in mm	Thermal conductivity λ _D W/(mK)
113577	XGRIVSFTOP30DR 050	60.0	3.00	80	▶ 50	0.032
113584	XGRIVSFTOP30DR 060	52.5	3.15	70	▶ 60	0.033
113591	XGRIVSFTOP30DR 080	37.5	3.00	50	▶ 80	0.035
113607	XGRIVSFTOP30DR 100	30.0	3.00	40	100	
113614	XGRIVSFTOP30DR 120	24.0	2.88	32	120	
113621	XGRIVSFTOP30DR 140	22.5	3.15	30	140	

▶ Delivery period on request.

Additional dimensions and order quantities from 6 pallets on request. Delivery by pack and pallet.

Austrotherm WA Inverted Roof Fleece

Highly vapour-diffusive, waterproof separating layer for use in inverted roofs.



Colour: Grey

Fire behaviour: E

Sd value: 0.02 m

Weathering period: 3 months

Operating temperature range: -40 °C to +80 °C

EAN no. 9007646...	Item No.	Roll dimensions in m	Delivery thickness in mm
890430	HVD 3X50	3.0 x 50.0	0.68

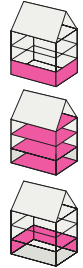
¹⁾ Delivery only in combination with Austrotherm XPS® products

Austrotherm XPS® TOP 30 GK (smooth surface)

Pressure-resistant thermal insulating board made of extruded polystyrene rigid foam, **with straight edge**.



Product type: according to EN 13164: XPS
 Application area: acc. to DIN 4108-10: DI, DEO, WAB, WZ
 Compressive strength: dh
 Edge shape: Straight edge
 Colour: Pink
 Effective dimensions: 1250 x 600 mm
 Effective area: 0.75 m² per board
 Pressure resistance: ≥ 300 kPa (≥ 30 t/m²)
 Board format: 1250 x 600 mm



- ▶ Exterior cellar wall
- ▶ In wet areas
- ▶ Core insulation

EAN no. 9007646...	Item No.	m ² per pack	m ³ per pack	m ³ per pallet	Parts per pack	Packs per pallet	Thickness in mm	Thermal conductivity λ _D W/(mK)
101185	XGGKTOP30 030	10.50	0.315	3.780	14	12	▶ 30	0.033
101192	XGGKTOP30 040	7.50	0.300	3.600	10	12	▶ 40	0.032
101208	XGGKTOP30 050	6.00	0.300	3.600	8	12	▶ 50	
101215	XGGKTOP30 060	5.25	0.315	3.780	7	12	▶ 60	0.033
101222	XGGKTOP30 080	3.75	0.300	3.600	5	12	▶ 80	0.035
101239	XGGKTOP30 100	3.00	0.300	3.600	4	12	▶ 100	

- ▶ Delivery period on request.

Austrotherm Universal Construction Board

Universal board made of extruded polystyrene rigid foam.



Edge shape: Straight edge
 Colour: Pink
 Effective dimensions: 1250 x 600 mm
 Effective area: 0.75 m² per board
 Board format: 1250 x 600 mm

Price: € 361.00/m³ excluding VAT

- ▶ Separating layer

EAN no. 9007646...	Item No.	Surface	m ² per pack	m ³ per pack	m ³ per pallet	Parts per pack	Packs per pallet	Thickness in mm
100690	XGGKTOP20 020	smooth	15	0.300	3.600	20	12	20
104506	XPGKTOP 020	embossed	15	0.300	3.600	20	12	20

Austrotherm Foundation Plate Insulating System

Austrotherm Foundation Plate Insulating System for formwork and insulation of foundation plates of any thickness.



► Formwork and insulation of foundation or floor plates

Quantities per 1.25 m	Parts	Speed bolts per bracket
System bracket	2-4	4
Add-on bracket	1	5
Speed bolts	21	

Reusable add-on bracket.

NOTE: Quantity per 1.25 m

EAN no. 9007646...	Item No.	Components	Parts per pack	Size in mm	Length in mm
890461	HXAUFSATZ	Add-on bracket	► 20	60x100	1250
890454	HXSPEED	Speed bolt	► 50		50
832058	HXSYSTEM	System bracket	► 25	100x150	

Austrotherm XPS® TOP 50 SF Thickness according to measurement
 Austrotherm XPS® TOP 70 SF Thickness according to measurement

► Delivery period on request.
 † Delivery only in combination with Austrotherm XPS® products.
 Assembly is performed and custom cuts are produced on site. Available only in whole packs.

TIP: To use our calculation tool, go to austrotherm.com



Application areas of Austrotherm XPS®

Recommended application areas of Austrotherm XPS®	Floors		Exterior walls				Inverted roofs				Other applications									
	Underneath load bearing floor plate	Above load bearing floor plate	Wet areas	Industrial floors	Exterior cellar walls *	Base area	Ceiling grate	Thermal bridges	Core insulation	Gravel roofs	Terrace roofs	Parking decks	Green roofs	Plus roofs (renovation)	Duo roofs	Sports halls	Railway construction	Road construction	Artificial ice rinks	Fruit cellars
Austrotherm XPS® Premium 30		●	●	●	●				●	●			●	●					●	●
Austrotherm XPS® Premium P						●	●	●												
Austrotherm XPS® PLUS 30		●	●	●	●				●	●			●	●					●	●
Austrotherm XPS® PLUS P						●	●	●												
Austrotherm XPS® TOP 30	●	●	●	●	●				●	●		●	●	●		●			●	●
Austrotherm XPS® TOP 30 TB	●	●	●	●	●				●	●		●	●	●		●			●	●
Austrotherm XPS® TOP Drain					●															
Austrotherm XPS® TOP 50	●	●	●	●	●					●	●	●	●	●	●	●	●	●	●	●
Austrotherm XPS® TOP 50 TB	●	●	●	●	●					●	●	●	●	●	●	●	●	●	●	●
Austrotherm XPS® TOP 70	●	●	●	●	●					●	●	●	●			●	●	●	●	●
Austrotherm XPS® TOP 70 TB	●	●	●	●	●					●	●	●	●			●	●	●	●	●
Austrotherm XPS® TOP P						●	●	●												
Austrotherm XPS® TOP P TB						●	●	●												
Austrotherm Universal Construction Board		●						●												

* are to be clarified in accordance with DIN 18533

Austrotherm XPS® palletising

The following generally applies:		For 12, 16, 22, 24 and 26 cm:		For 18, 34 and 36 cm:		For 28 cm:		For 30 and 32 cm:	
1 pal.	12 packs	1 pal.	10 packs	1 pal.	14 packs	1 pal.	18 packs	1 pal.	16 packs
2 pal.	24 packs	2 pal.	20 packs	2 pal.	28 packs	2 pal.	36 packs	2 pal.	32 packs
3 pal.	36 packs	3 pal.	30 packs	3 pal.	42 packs	3 pal.	54 packs	3 pal.	48 packs
4 pal.	48 packs	4 pal.	40 packs	4 pal.	56 packs	4 pal.	72 packs	4 pal.	64 packs
5 pal.	60 packs	5 pal.	50 packs	5 pal.	70 packs	5 pal.	90 packs	5 pal.	80 packs
6 pal.	72 packs	6 pal.	60 packs	6 pal.	84 packs	6 pal.	108 packs	6 pal.	96 packs
7 pal.	84 packs	7 pal.	70 packs	7 pal.	98 packs	7 pal.	126 packs	7 pal.	112 packs
8 pal.	96 packs	8 pal.	80 packs	8 pal.	112 packs	8 pal.	144 packs	8 pal.	128 packs
9 pal.	108 packs	9 pal.	90 packs	9 pal.	126 packs	9 pal.	162 packs	9 pal.	144 packs
10 pal.	120 packs	10 pal.	100 packs	10 pal.	140 packs	10 pal.	180 packs	10 pal.	160 packs
11 pal.	132 packs	11 pal.	110 packs	11 pal.	154 packs	11 pal.	198 packs	11 pal.	176 packs
12 pal.	144 packs	12 pal.	120 packs	12 pal.	168 packs	12 pal.	216 packs	12 pal.	192 packs
13 pal.	156 packs	13 pal.	130 packs	13 pal.	182 packs	13 pal.	234 packs	13 pal.	208 packs
14 pal.	168 packs	14 pal.	140 packs	14 pal.	196 packs	14 pal.	252 packs	14 pal.	224 packs
15 pal.	180 packs	15 pal.	150 packs	15 pal.	210 packs	15 pal.	270 packs	15 pal.	240 packs
16 pal.	192 packs	16 pal.	160 packs	16 pal.	224 packs	16 pal.	288 packs	16 pal.	256 packs
17 pal.	204 packs	17 pal.	170 packs	17 pal.	238 packs	17 pal.	306 packs	17 pal.	272 packs
18 pal.	216 packs	18 pal.	180 packs	18 pal.	252 packs	18 pal.	324 packs	18 pal.	288 packs
19 pal.	228 packs	19 pal.	190 packs	19 pal.	266 packs	19 pal.	342 packs	19 pal.	304 packs
20 pal.	240 packs	20 pal.	200 packs	20 pal.	280 packs	20 pal.	360 packs	20 pal.	320 packs
21 pal.	252 packs	21 pal.	210 packs	21 pal.	294 packs	21 pal.	378 packs	21 pal.	336 packs
22 pal.	264 packs	22 pal.	220 packs	22 pal.	308 packs	22 pal.	396 packs	22 pal.	352 packs
23 pal.	276 packs	23 pal.	230 packs	23 pal.	322 packs	23 pal.	414 packs	23 pal.	368 packs
24 pal.	288 packs	24 pal.	240 packs	24 pal.	336 packs	24 pal.	432 packs	24 pal.	384 packs

XPS® industry applications

Individual XPS products tailored to customer requirements



The greatest special product is only as good as the material it's made of. Austrotherm is a pioneer in the field of insulation materials and combines many years of experience with research and development expertise. XPS special products offer the ideal solution for a wide range of applications. The outstanding properties of Austrotherm XPS® come into play especially when high demands are placed on the stability of the material.

The advantages

- ▶ Very high compressive strength
- ▶ Mostly waterproof
- ▶ High mechanical strength
- ▶ Easy to work with
- ▶ Good resistance to ageing

We make use of the versatile processing possibilities of XPS. Austrotherm XPS® offers various edge designs and surface structures according to individual customer requirements.

Adaptability to the field of application

- ▶ Austrotherm XPS® compressive strengths TOP 30, TOP 50, TOP 70
- ▶ Various edge formations
- ▶ Special formats possible by arrangement
- ▶ A variety of surface finishes
- ▶ Determination of possible tolerance ranges

Important note:

When used in stable ceiling areas, length changes can occur due to temperature changes, which may lead to gaps. This is a normal reaction of XPS® with applications of this type, and does not constitute grounds for complaint, nor will it be recognised as such.



Austrotherm UNIPLATTE®

Countless design options for the sanitary area



The Austrotherm UNIPLATTE® board is a perfect support element, made of pink extruded polystyrene rigid foam, coated with a synthetic resin in modified mortar and reinforced with a glass fibre net on both sides. The Austrotherm UNIPLATTE® is waterproof, heat-insulating and robust. It is particularly suited as a substrate for laying tiles using the thin bed method. The scope for design ideas provided by Austrotherm UNIPLATTE® is extremely wide. Since the product is easy to work with, an extremely wide range of building developer requirements can be easily put into practice. Austrotherm UNIPLATTE® boards can be used as much for renovations as they can for new buildings.

Applications:

- ▶ Cladding of wall and floor surfaces in dry and wet areas of interiors together with waterproofing
- ▶ Especially for the cladding of sanitary fixtures and fittings, e.g. bath tubs
- ▶ Suitable solution for renovation and new construction and as levelling for wall and floor surfaces
- ▶ Individual design options for manufacturing partition walls in showers or WC facilities
- ▶ Design of unique built-in washbasins, shelves, water containers, shelves and circular panelling
- ▶ Simple covering of wooden floors as well as wooden and metal post and beam constructions

Advantages of Austrotherm UNIPLATTE®

- ▶ High degree of design diversity
- ▶ Dimensionally accurate and level
- ▶ Easy processing due to simple cutting to size
- ▶ Outstanding bonding properties
- ▶ Low weight for easy transport
- ▶ Thermal insulation
- ▶ High pressure resistance
- ▶ Ageing resistant and dimensionally stable

Austrotherm UNIPLATTE®

Thickness in mm	Application examples
4, 6, 10	As a corrective panel, e.g. for half-height tiled bathrooms. Old tiles often have a thickness of 4 – 6 mm. Walls can be retiled to ceiling height without having to remove the old tiles. If the wall was previously tiled using the thick-layer procedure, the 10 mm panel is suitable.
10, 12,5	Used, among other things, as a flush-fitting connection panel for commercially available building boards in wet and damp areas.
20, 30, 40, 50	For constructions of all kinds, e.g. claddings, furniture in the bathing area such as washstands and shelves, attachment installations, etc.
60, 80	For individual design and balancing possibilities, e.g. for furniture in the bathroom area and for steps.
100, 120 on request, special design	When higher stability is required, e.g. as self-standing partition walls.



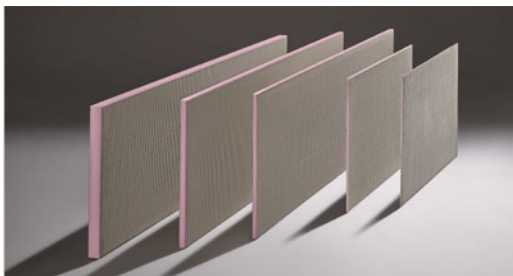
You can find everything you need to know about Austrotherm UNIPLATTE® in the folder on austrotherm.de



For dimensions, see page 25.

Austrotherm UNIPLATTE®

Coated base element as a substrate for laying tiles. Austrotherm XPS® insulating board, coated on both sides with polymer-modified mortar and reinforced with a glass fibre net.



Edge shape: Straight edge



- ▶ All wet rooms such as: Bathrooms, showers, WC facilities, wellness areas; ex: Partition walls, bathroom furniture etc.
- ▶ Outside wall cladding

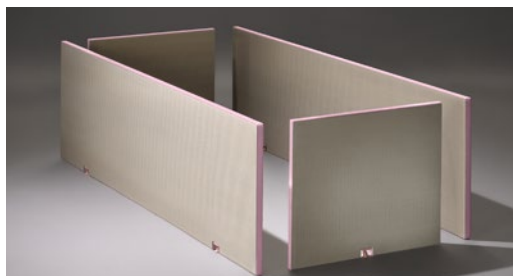
EAN no. 9007646...	Item No.	Board format in mm	Parts per pallet	Thickness in mm	Thermal conductivity λ_D W/(mK)	
200109	UPL 004 1300	1300 x 600	80	4	0.033	
200000	UPL 006 1300	1300 x 600	160	6		
200178	UPL 010 1300	1300 x 600	108	10		
200017	UPL 010 2600	2600 x 600	108	10		
200208	UPL 012.5 2600	2600 x 600	90	12.5		
200024	UPL 020 2600	2600 x 600	60	20		
200031	UPL 030 2600	2600 x 600	40	30		
200048	UPL 040 2600	2600 x 600	30	40		
200055	UPL 050 2600	2600 x 600	24	50		
200062	UPL 060 2600	2600 x 600	20	60		
200093	UPL 080 2600	2600 x 600	16	80		
201083	UPL 100 2600	2600 x 600	12	▶ 100		0.036
201151	UPL 120 2600	2600 x 600	10	▶ 120		

Special sizes and other thicknesses on request.

- ▶ Delivery period on request.

Austrotherm UNIPLATTE® Bathtub element

Prefabricated bathtub element made of Austrotherm XPS® TOP, coated on both sides with polymer-modified mortar and reinforced with a glass fibre net.



Edge shape: Straight edge

- ▶ Cladding for bathtubs in both head and length area

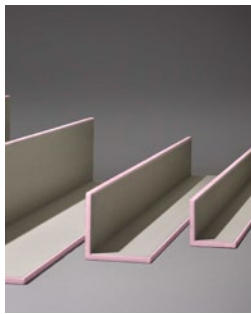
EAN no. 9007646...	Item No.	Board format in mm	Parts per pack	Thickness in mm	Thermal conductivity λ_D W/(mK)
200369	UWA 0730 STELL	Head piece 730 x 600 ¹⁾	30	▶ 30	0.035
200376	UWA 1770 STELL	Length piece 1770 x 600 ²⁾	30	▶ 30	
200383	UWA 2100 STELL	Length piece 2100 x 600 ²⁾	30	▶ 30	

¹⁾ 1 levelling foot ²⁾ 2 levelling feet

- ▶ Delivery period on request.

Austrotherm UNIPLATTE® L-/U-shaped board

Prefabricated Uniplatte board element made of Austrotherm XPS® TOP, coated on both sides with polymer-modified mortar and reinforced with a glass fibre net.



Edge shape: Straight edge

► For the production of vertical and horizontal pipe cladding

EAN no. 9007646...	Item No.	Board format in mm	Parts per pack	Thickness in mm
L-shaped board				
200512	URK 150/150 2600	2600 x 150 x 150	60	► 20
200529	URK 200/200 2600	2600 x 200 x 200	40	► 20
200550	URK 400/200 2600	2600 x 200 x 400	40	► 20
200536	URK 300/300 2600	2600 x 300 x 300	40	► 20
U-shaped board				
200277	UJK 200/200/200 2600	2600 x 200 x 200 x 200	50	► 20
200284	UJK 200/400/200 2600	2600 x 200 x 400 x 200	20	► 20
200291	UJK 300/600/300 2600	2600 x 300 x 600 x 300	12	► 20

Also available as individual parts.

► Delivery period on request.

Possible palletising of Austrotherm UNIPLATTE® boards

A) Full pallet

B) Half pallet (only available from Purbach storage site)

C) Mixed pallet I + II

Delivery conditions Austrotherm UNIPLATTE®:

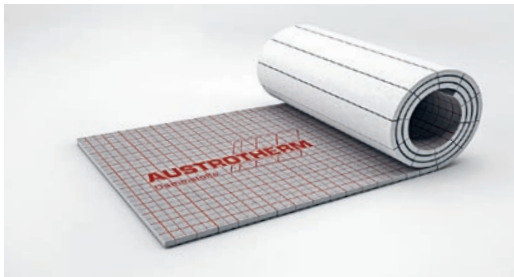
Minimum delivery quantity of 3 full pallets or individual pallets in combination with XPS deliveries of at least 20 m³ free domicile. Unloading by forklift truck is required.

► Delivery period on request.

	Board format in mm	Parts per pallet	Thickness in mm
► Mixed pallet I	1300 x 600	40	4
	1300 x 600	40	6
	1300 x 600	54	10
or			
► Mixed pallet II	2600 x 600	10	20
	2600 x 600	10	30
	2600 x 600	12	50

Austrotherm Impact sound insulation roll

Impact sound insulation rolls made of expanded polystyrene rigid foam with laminated fabric or aluminium foil



Cell content: Air
 Product type: According to ÖNORM B 6000: EPS T 650/1000
 Edge shape: Straight edge
 Effective dimensions: 10000 x 1000 mm
 Effective area: 10 m² per roll
 Application limit temperature: 85 °C

- ▶ Sheeting for quick and accurate laying
- ▶ Suitable for cement and liquid screeds
- ▶ Thermal and impact sound insulation
- ▶ Tear-resistant fabric with printed grid for positioning heating coils

Austrotherm Impact sound insulation roll	EAN no. 9007646...	Item No.	Format mm	Thickness/mm	Permissible pressure load-bearing capacity [kg/m ²]	m ² /roll
650 fabric	076674	ETR 0650 G 20	10,000 x 1000	▶ 20	650	10
	076681	ETR 0650 G 25	10,000 x 1000	▶ 25	650	10
	076698	ETR 0650 G 30	10,000 x 1000	30	650	10
	076704	ETR 0650 G 40	10,000 x 1000	▶ 40*	650	10
	076711	ETR 0650 G 50	10,000 x 1000	▶ 50*	650	10
1000 fabric	076742	ETR 1000 G 30	10,000 x 1000	▶ 30	1000	10
	076759	ETR 1000 G 40	10,000 x 1000	▶ 40*	1000	10
650 Alu	076629	ETR 0650 A 20	10,000 x 1000	▶ 20	650	10
	076636	ETR 0650 A 25	10,000 x 1000	▶ 25	650	10
	076643	ETR 0650 A 30	10,000 x 1000	30	650	10
	076650	ETR 0650 A 40	10,000 x 1000	▶ 40*	650	10
	076667	ETR 0650 A 50	10,000 x 1000	▶ 50*	650	10
1000 Alu	076728	ETR 1000 A 30	10,000 x 1000	▶ 30	1000	10
	076735	ETR 1000 A 40	10,000 x 1000	▶ 40*	1000	10



Waterproof



Dimensionally stable



Noise stop



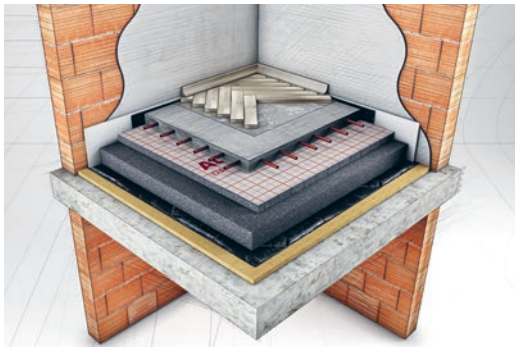
Sound and heat insulating

* Thicknesses 40 and 50 mm are supplied as a folding sheet. Other thicknesses are possible as folding sheet on request.

▶ Delivery period on request.

Austrotherm Impact sound insulation roll PLUS

Impact sound insulation rolls made of expanded polystyrene rigid foam with laminated fabric or aluminium foil



Cell content: Air
 Product type: According to ÖNORM B 6000: EPS T 650/1000
 Edge shape: Straight edge
 Effective dimensions: 10000 x 1000 mm
 Effective area: 10 m² per roll
 Application limit temperature: 85 °C

- ▶ Sheeting for quick and accurate laying
- ▶ Suitable for cement and liquid screeds
- ▶ Thermal and impact sound insulation
- ▶ Tear-resistant fabric with printed grid for positioning heating coils

Austrotherm Impact sound insulation roll	EAN no. 9007646...	Item No.	Format mm	Thickness/mm	Permissible pressure load-bearing capacity [kg/m ²]	m ² /roll
PLUS 650 fabric	076810	ETRP 0650 G 20	10,000 x 1000	▶ 20	650	10
	076827	ETRP 0650 G 25	10,000 x 1000	▶ 25	650	10
	076834	ETRP 0650 G 30	10,000 x 1000	▶ 30	650	10
	076841	ETRP 0650 G 40	10,000 x 1000	▶ 40*	650	10
	076858	ETRP 0650 G 50	10,000 x 1000	▶ 50*	650	10
PLUS 1000 fabric	076889	ETRP 1000 G 30	10,000 x 1000	▶ 30	1000	10
	076896	ETRP 1000 G 40	10,000 x 1000	▶ 40*	1000	10
PLUS 650 Alu	076766	ETRP 0650 A 20	10,000 x 1000	▶ 20	650	10
	076773	ETRP 0650 A 25	10,000 x 1000	▶ 25	650	10
	076780	ETRP 0650 A 30	10,000 x 1000	▶ 30	650	10
	076797	ETRP 0650 A 40	10,000 x 1000	▶ 40*	650	10
	076803	ETRP 0650 A 50	10,000 x 1000	▶ 50*	650	10
PLUS 1000 Alu	076865	ETRP 1000 A 30	10,000 x 1000	▶ 30	1000	10
	076872	ETRP 1000 A 40	10,000 x 1000	▶ 40*	1000	10



Waterproof



Dimensionally stable



Noise stop



Sound and heat insulating

* Thicknesses 40 and 50 mm are supplied as a folding sheet. Other thicknesses are possible as folding sheet on request.

▶ Delivery period on request.

Austrotherm Resolution®

High-performance insulating material which offers amazing benefits even where space is limited



With an outstanding thermal conductivity of $\lambda_D = 0.022 \text{ W/(mK)}$, Austrotherm Resolution®, an insulating material made from resol rigid foam, makes short work of tight space conditions. The extremely good insulating value, together with the resulting thinner material, means it can be used on surfaces that previously could not be insulated well due to space restrictions. But even where there are difficult structural conditions, there is now no longer any need to make compromises in complying with the U-value.

The advantages

- ▶ Excellent thermal conductivity: $\lambda_D = 0.022 \text{ W/(mK)}$
- ▶ Very slim designs
- ▶ Quick and easy processing
- ▶ Low weight
- ▶ Ideal for new buildings and thermal renovation
- ▶ Individual design options
- ▶ Available as roof, wall and floor insulation

Application areas of Austrotherm Resolution®	Walls	Facade insulation	Interior insulation	Core insulation	Ventilated façade	Roofs	Warm roofs (flat roofs)	Green roofs	Lightweight roof construction	Sloping roofs	Above-rafter insulation	Below-rafter insulation	Ceilings	Top storey ceilings	Mezzanine ceilings	Ceilings over cellars	Ceilings over passageways
Austrotherm Resolution® Block		●	●	●	●		●	●	●	●	●						●
Austrotherm Resolution® Fassade		●			●						●						
Austrotherm Resolution® Flachdach							●	●	●	●	●	●					
Austrotherm Resolution® Boden			●	●										●	●	●	●

▶ Ordering, delivery and invoicing are performed by Austrotherm GmbH, 7423 Pinkafeld, Peter Schmid-Gasse 1, Austria, tel.: +43 2633 401-0 or under bestellung@austrotherm.at

You can find the contact persons on: www.austrotherm.at/kontakt/ansprechpartner



Austrotherm Resolution®

Resol rigid foam with closed cell structure, offering high thermal insulation. Its unique properties make this high-performance insulating material ideal for use as roof, wall, floor and thermal bridge insulation.

Further product information:
www.austrotherm.at/produkte/austrotherm-resolution



The advantages

- ▶ Super-insulating – over 40 % better insulating effect
- ▶ Super-slim – space-saving insulation solution
- ▶ Innovative insulation technology



Austrotherm Resolution® Boden

Resol rigid foam with closed cell structure, offering high thermal insulation. Ideal for use as floor insulation. Super-slim installation heights in the floor area are possible.



Super-slim – space-saving insulation solution



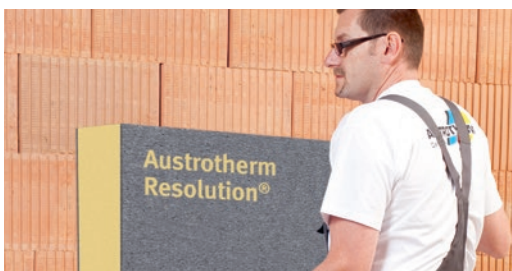
$\lambda_D = 0.022 \text{ W/(mK)}$



Increased room height due to extremely low installation height

Austrotherm Resolution® Fassade

Resol rigid foam with closed cell structure and EPS PLUS lamination, offering high thermal insulation. The high-performance insulating material is ideal for space-saving use as façade insulation in a thermal insulation composite system.



Super-slim – space-saving insulation solution



Quick and easy processing



$\lambda_D = 0.022 \text{ W/(mK)}$



Thermal insulation that is more than 40% better than EPS F

Austrotherm Resolution® Flachdach

Resol rigid foam with closed cell structure, offering high thermal insulation. Ideal for use as flat roof insulation, such as warm roof insulation and duo roof insulation. Extremely low installation heights are possible. With single-sided EPS-PLUS lamination on the UPPER SURFACE.



Enormous weight reduction



Super-slim – space-saving insulation solution



$\lambda_D = 0.022 \text{ W/(mK)}$

Austrotherm façade profiles

Classical and modern façades with creative design



The façade is the face of the house, and as such it reflects on the house's inhabitants. With individual profiles, a truly unique design can be created. Anyone who works with historical structures understands the distinctive design options offered by façade profiles. Individual solutions mean that architects and building developers can give their creativity free reign in the design of modern building façades as well.



The advantages

- ▶ For modern and classical façades
- ▶ Individual design options
- ▶ Weatherproof
- ▶ Cost-effective and easy to work with
- ▶ Flexible

Wide range of profiles on offer

- ▶ Window and door frames
- ▶ Sill profiles and cornices
- ▶ Ornaments / Columns
- ▶ Ashlar elements / Keystones
- ▶ Decorative elements / Special elements

We strive to optimise the services we offer you by constantly creating new developments: The new and improved Austrotherm TOP coating compound now ensures even better quality.



Contact:
Robert Huber

Austrotherm Divisional Manager
Façade profiles
Tel.: +43 664 807 233-343
robert.huber@austrotherm.at

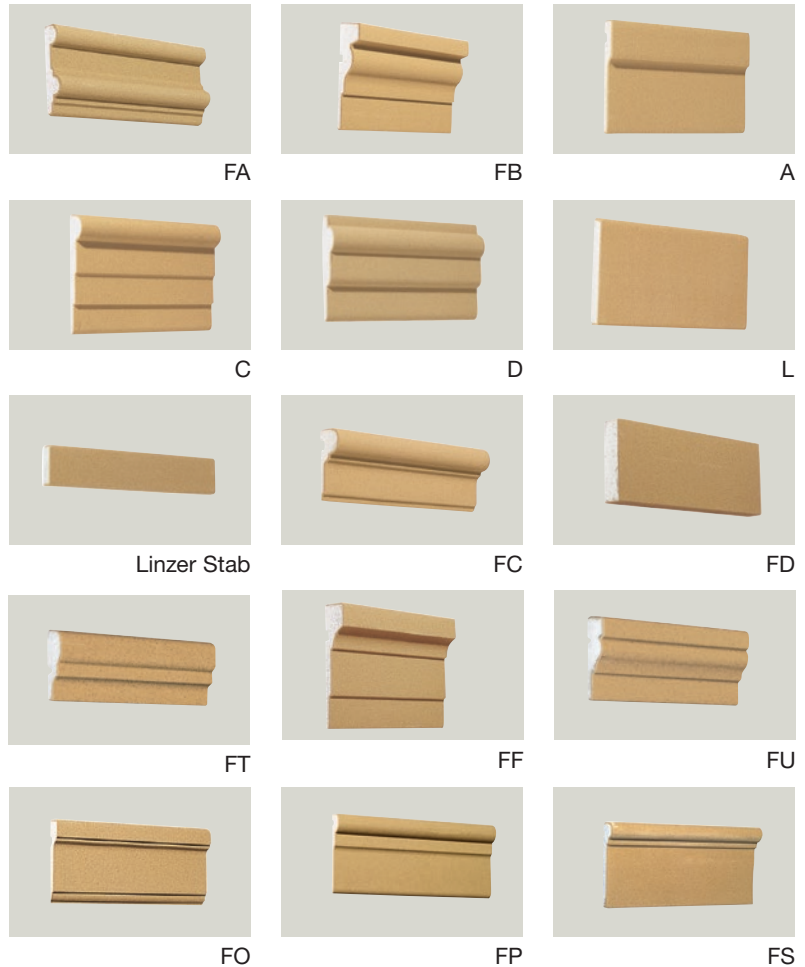


Austrotherm façade profiles Window and door frames

To ensure window and door frames become eye-catching elements.



- ▶ Any desired architectonic façade designs
- ▶ Advantages when replacing windows
- ▶ Elastic, flexible
- ▶ Also suitable for rounded substrates
- ▶ Window and door frame or decorative cladding



Supplied ready-coated – simply require painting (with commercially available façade paint)

EAN no. 9007646...	Item No.	W x H x L in mm	Unit	Austrotherm PU butt joint adhesive ¹⁾ Number of joints/cartridge	Austrotherm TOP coating compound Number of joints/kg ²⁾
310006	FA	84 x 23 x 2500	Parts	25	60
310013	FB	135 x 40 x 2500	Parts	15	36
310020	A	135 x 25 x 2500	Parts	20	48
310037	C	145 x 35 x 2500	Parts	15	36
310044	D	120 x 30 x 2500	Parts	20	48
310068	L	120 x 20 x 2500	Parts	20	48
310075	Linzer Stab	40 x 25 x 2500	Parts	50	120
310082	FC	67 x 29 x 2500	Parts	25	60
310099	FD	80 x 20 x 2500	Parts	25	60
310174	FT	68 x 21 x 2500	Parts	25	60
310112	FF	155 x 40 x 2500	Parts	13	31
310181	FU	100 x 30 x 2500	Parts	20	48
310136	FO	145 x 40 x 2500	Parts	13	31
310143	FP	135 x 35 x 2500	Parts	15	36
310150	FS	150 x 45 x 2500	Parts	13	31

1) Guide values for the consumption quantities of Austrotherm PU butt joint adhesive or by the equivalent PU adhesive supplied by Austrotherm in cartridges per joint.

2) Guide values for the consumption quantities of Austrotherm TOP coating compound per joint in kg.

Note: You can find more detailed information on consumption quantities at www.austrotherm.com

Note: A warranty in the butt joint area is only valid where the Austrotherm PU butt joint adhesive is used and applied correctly, or by the equivalent PU adhesive and Austrotherm TOP! coating compound supplied by Austrotherm. (see processing guidelines).

Austrotherm design element

Austrotherm design elements enable façades to be individually structured and custom colour designs to be created. The 2 cm thick and extremely lightweight Austrotherm design elements have a permanently weatherproof and paintable special coating on five sides.



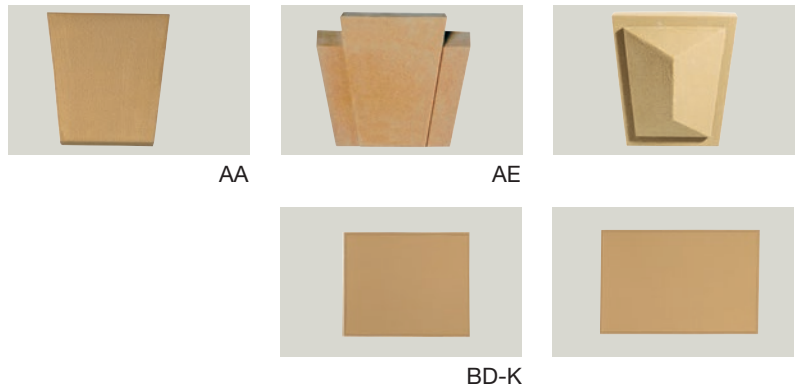
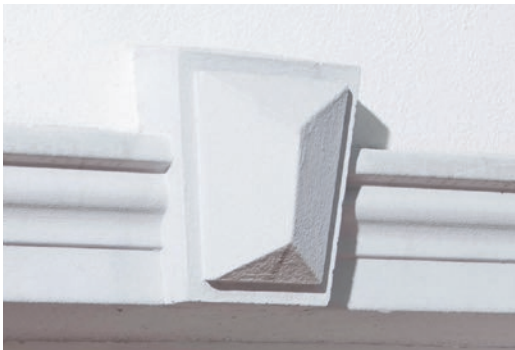
Façade insulating board with Austrotherm TOP coating compound.

Dimensions W x L in mm	Board thickness
Various formats up to 1000 x 2500 mm available	
Example prices	
638 x 1388 mm	20 mm
317 x 2038 mm	20 mm

- ▶ One-part up to a board size of 1000 x 2500 mm
- ▶ Custom board format and designs possible
- ▶ Easy to work with
- ▶ Ready-to-paint surface
- ▶ Austrotherm TOP coating compound.

Austrotherm façade profiles Keystones, ashlar elements

Decorative parts for visual design and emphasis of the outside edges of the building.



EAN no. 9007646...	Item No.	W x H x L in mm	Unit
300014	AA	200 / 150 x 60 / 35 x 205	Parts
300076	AE	303 / 210 x 73 / 50 x 250	Parts
300038	CB	185 / 140 x 100 / 75 x 205	Parts
300045	BD-K	400 x 35 x 330	Parts
300052	BD-G	500 x 35 x 330	Parts

Austrotherm façade profiles Sills, fascia profiles

Sills or roofing profiles are an important addition to window frames below window ledges. Fascia profiles are used for visual structuring of buildings with large floor heights.



SA



SG



SE



SH

Supplied ready-coated – simply require painting (with commercially available façade paint)

- ▶ Standardisation of visual design
- ▶ Additional thermal insulation
- ▶ Structuring of building sections, when used below window ledges

EAN no. 9007646...	Item No.	W x H x L in mm	Unit	Austrotherm PU butt joint adhesive ¹⁾ Number of joints/cartridge	Austrotherm Top coating compound Number of joints/kg ²⁾
330004	SA	130 x 50 x 2500	Parts	10	24
330066	SG	135 x 73 x 2500	Parts	8	19
305712	SD	120 x 65 x 2500	Parts	10	24
330028	SE	150 x 80 x 2500	Parts	5	12
330073	SH	145 x 100 x 2500	Parts	5	12

1) Guide values for the consumption quantities of Austrotherm PU butt joint adhesive or by the equivalent PU adhesive supplied by Austrotherm in cartridges per joint.

2) Guide values for the consumption quantities of Austrotherm TOP! coating compound per joint in kg.

Note: You can find more detailed information on consumption quantities at www.austrotherm.com

Note: A warranty in the butt joint area is only valid where the Austrotherm PU butt joint adhesive is used and applied correctly, or by the equivalent PU adhesive and Austrotherm TOP! coating compound supplied by Austrotherm. (see processing guidelines).



Modern interpretation of façade profiles

- ▶ Austrotherm comb and corrugated profiles
- ▶ Individual design options
- ▶ Cost-effective and easy to work with
- ▶ With lambda value if required

Tip: Austrotherm® offers approx. 7500 other façade profiles. You will find a list of all special facade profiles on austrotherm.com. Here you can search by application and by the desired size and you can also download graphics.



Austrotherm window sill connection profile

Prefabricated substrate element for attaching window sill panels.



Decorative design element that enables window sill panels to be installed horizontally through façades and enables the thickness of the insulating material laid over the window sill panels to be reduced.

- ▶ Produced in insulating material thickness
- ▶ Resistant to heavy rain
- ▶ Variable depth and thickness
- ▶ Prefabricated reinforced connection
- ▶ Suitable for all thermal insulation composite systems
- ▶ Weatherproof
- ▶ Integrated plastic strips – for attaching the flashing
- ▶ Available for delivery in a range of variants

EAN no. 9007646...	W x H x L in mm	Unit	Description
312000	205 x 204 x 2500	Parts	▶ Austrotherm window sill connection profile

▶ Delivery period on request.

Note: A warranty in the butt joint area is only valid where the Austrotherm PU butt joint adhesive and Austrotherm TOP coating compound have been correctly used or processed (see processing guidelines). These can only be ordered in connection with Austrotherm façade profiles.

Austrotherm frame insulating element

Subsequent insulation for window renovations, badly insulated window frames or damage due to damp in the interior.



Best thermal insulation properties
with thermal conductivity $\lambda_D = 0.031 \text{ W/(mK)}$



EAN no. 9007646...	W x H x L in mm	Unit
310808	110 x 30 x 2500	Parts

Also available in other dimensions.

▶ Delivery period on request.

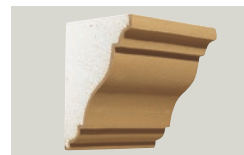
- ▶ Any desired architectonic façade designs
- ▶ Considerable working time saved compared to working with plastered elements
- ▶ Additional insulation of window jambs, for window renovations and badly insulated window frames

Austrotherm façade profiles Cornices

Used as a connection between the roof and the façade among other things.
Used to improve the appearance of old and new buildings.



GF



GC



GG



GE

Supplied ready-coated – simply require painting with commercially available façade paint.



- ▶ Any desired architectonic façade designs
- ▶ Advantages when replacing windows
- ▶ Elastic, flexible
- ▶ Also suitable for rounded substrates
- ▶ Old and new buildings – improved appearance

EAN no. 9007646...	Item No.	W x H x L in mm	Unit	Austrotherm PU butt joint adhesive ¹⁾ Number of joints/cartridge	Austrotherm Top coating compound Number of joints/kg ²⁾
320043	GF	230 x 230 x 2500	Parts	1.5	4
320012	GC	215 x 160 x 2500	Parts	2	5
320050	GG	250 x 200 x 2500	Parts	2	5
320036	GE	250 x 250 x 2500	Parts	1.5	4

1) Guide values for the consumption quantities of Austrotherm PU butt joint adhesive or by the equivalent PU adhesive supplied by Austrotherm in cartridges per joint.

2) Guide values for the consumption quantities of Austrotherm TOP coating compound per joint in kg.

Note: You can find more detailed information on consumption quantities at www.austrotherm.com

Note: A warranty in the butt joint area is only valid where the Austrotherm PU butt joint adhesive is used and applied correctly, or by the equivalent PU adhesive and Austrotherm TOP! coating compound supplied by Austrotherm. (see processing guidelines).

Austrotherm façade profiles Decorative elements

The finishing touch – turns every designed façade into an architectural jewel.



ZB



ZA 300



ZF

Supplied ready-coated – simply require painting (with commercially available façade paint)

- ▶ Any desired architectonic façade designs
- ▶ No mechanical anchoring required
- ▶ New building or renovation

EAN no. 9007646...	Item No.	ø x D in mm	Unit
300069	ZA 300	300 x 20	Parts
315902	ZB	200 x 60	Parts
300083	ZF	280 x 30	Parts

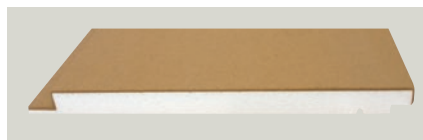
Note: A warranty in the butt joint area is only valid where the Austrotherm PU butt joint adhesive is used and applied correctly, or by the equivalent PU adhesive and Austrotherm TOP! coating compound supplied by Austrotherm. (see processing guidelines).

Austrotherm groove profile

For decorative design in thermal insulation composite systems.



Austrotherm insertion groove profile



Austrotherm tongue and groove board



Austrotherm groove profile in insulating material thickness

Supplied ready-coated – simply require painting (with commercially available façade paint)

- ▶ Can be produced in insulating material thickness
- ▶ Resistant to heavy rain
- ▶ Variable groove depth and width
- ▶ Prefabricated reinforced connection
- ▶ Suitable for all thermal insulation composite systems
- ▶ Weatherproof

EAN no. 9007646...	Description	W x H x L in mm	Unit
307860	▶ Austrotherm insertion groove profile	80 x 35 x 2500	Parts
307853	▶ Austrotherm tongue and groove board	380 x 30 x 2500	Parts
307846	▶ Austrotherm groove profile in insulating material thickness	510 x 84 x 2500	Parts

Austrotherm TOP coating compound

Coating compound with increased surface strength.



For façade profiles made using TOP for sealing joints.

EAN no. 9007646...	Item No.	Description	Unit in kg
890034	HFB 1	TOP coating compound	1
890041	HFB 5	TOP coating compound	5

Note: The Austrotherm TOP coating compound must not be used to bond profiles and profile butt joints.

- ▶ Impact resistance – 5 kJ
- ▶ Same structure as the profile surfaces
- ▶ For sealing joints in Austrotherm façade profiles

The TOP coating boasts a higher surface strength (approx. 5 kJ), making it suitable for areas that are subject to heavier stresses. Delivery time and price on request.

- ▶ Delivery and invoicing are performed by Austrotherm GmbH, 7423 Pinkafeld, Peter Schmid-Gasse 1, Austria. This is why the freight costs for the Austrotherm TOP coating compound are invoiced separately.

Austrotherm PU butt joint adhesive or PU adhesive of equivalent quality supplied by Austrotherm

For full-surface bonding of butt joints.



- ▶ Quick setting time
- ▶ Bonding of butt joints

EAN no. 9007646...	Item no.	Description	Unit in ml
310709	HFSTOSS	PU butt joint adhesive	310

Austrotherm additional work

- ▶ Custom-made products only possible with the relevant detailed sketches. Price and delivery time on request.

1) Based on the gross running metre price of the respective profile type.

Version	Unit
Mitre cut	per cut
Face side coating	per side
Face side shaping	per side

Note: A warranty in the butt joint area is only valid where the Austrotherm PU butt joint adhesive is used and applied correctly, or by the equivalent PU adhesive and Austrotherm TOP! coating compound supplied by Austrotherm. (see processing guidelines).

Austrotherm parapet element

Prefabricated element for constructing parapets quickly.



With integrated plastic strips for attaching the flashing

- ▶ Available on request in Austrotherm EPS® PLUS with thermal conductivity of $\lambda_D = 0.031 \text{ W/(mK)}$
- ▶ Mounting bracket for attachment in the substrate
- ▶ Integrated plastic strips – for attaching the flashing
- ▶ Coated with the Austrotherm TOP coating compound
- ▶ With integrated, prefabricated gradient

Austrotherm XPS®

Technical data

Properties	Standard	Unit	Austrotherm XPS® Premium 30 SF	Austrotherm XPS® Premium P	Austrotherm XPS® PLUS 30 SF	Austrotherm XPS® PLUS P	Austrotherm XPS® TOP 30 SF
Product type	EN 13164	—	XPS	XPS	XPS	XPS	XPS
Compressive strength	DIN 4108-10	—	dh	dh	dh	dh	dh
Thermal conductivity	EN 13164	W/(mK)	4 – 40 cm: 0.027	8 – 40 cm: 0.027	8 – 40 cm: 0.032	8 – 40 cm: 0.032	3 cm: 0.033 4 – 5 cm: 0.032 6 cm: 0.033 7 – 12 cm: 0.035 14 – 16 cm: 0.036 18 – 20 cm: 0.037
Third-party monitoring	—	—	FIW Munich	FIW Munich	FIW Munich	FIW Munich	FIW Munich
Surface	—	—	smooth	embossed	smooth	embossed	smooth
Edge shape	—	—	SF	GK	SF	GK	GK, SF
Dimensions: Length: Width: Thickness tolerance:	DIN EN 822 DIN EN 822 EN 13164	mm mm —	1250 600 T1	1250 600 T1	1250 600 T1	1250 600 T1	1250 600 T1
Gross density approx.	DIN EN 1602	kg/m³	37	37	30	30	30
Pressure resistance	DIN EN 826 DIN B 6000	— kPa	CS(10\Y)300 ≥ 300	CS(10\Y)300 ≥ 300	CS(10\Y)300 ≥ 300	CS(10\Y)300 ≥ 300	CS(10\Y)300 ≥ 300
Creeping behaviour (after 50 years < 2%) Permissible long-term compressive stress	DIN EN 1606	— kPa	CC(2/1.5/50)130 130	— —	CC(2/1.5/50)130 130	— —	CC(2/1.5/50)130 130
Elasticity module	DIN EN 826	kPa	12000	12000	12000	12000	12000
Closed cell structure	DIN EN ISO 4590	%	≥ 95	≥ 95	≥ 95	≥ 95	≥ 95
Water absorption: Capillary through diffusion	— DIN EN 12088	Vol% —	0 WD(V)3 ²⁾	0 WD(V)5 ³⁾	0 WD(V)3 ²⁾	0 WD(V)5 ³⁾	0 WD(V)3 ²⁾
Application limit temperature	—	°C	70	70	70	70	70
Linear Coefficient of thermal expansion	—	mm/mK	0.07	0.07	0.07	0.07	0.07
Resistance to alternating frost-thaw cycles	DIN EN 12099	—	FTCD: 1	FTCD: 2	FTCD: 1	FTCD: 2	FTCD: 1
Fire behaviour:	DIN EN 13501-1	—	E	E	E	E	E

GK... straight edge, SF... stepped profile ; * Core material XPS

¹⁾ Applies from 5 cm thickness

²⁾ Thickness 50 mm ≤ 3 % vol; thickness 100 mm ≤ 1.5 % vol; thickness 200 mm ≤ 0.5 % vol; intermediate values are interpolated.

³⁾ Thickness 50 mm ≤ 5 % vol; thickness 100 mm ≤ 3 % vol; thickness 200 mm ≤ 1.5 % vol; intermediate values are interpolated.

⁴⁾ After 300 frost-thaw cycles, max. 2 vol% water absorption

⁵⁾ After 300 frost-thaw cycles, max. 1 vol% water absorption

Important notes:

Every construction measure – including thermal insulation with Austrotherm XPS® – is subject to applicable construction regulations, which must be observed.

- ▶ AUSTROTHERM XPS® is not resistant to permanent UV radiation; it must be protected by suitable measures.
- ▶ AUSTROTHERM XPS® is not resistant to radiant heat; for permanent use, the threshold temperature of 70 °C should not be exceeded under any circumstances. Dark-coloured film and filter fleece can encourage an accumulation of heat and invariably result in deformation of the boards.

- ▶ If AUSTROTHERM XPS® comes into contact with materials that contain volatile substances (e.g. solvents, plasticisers, etc.), damage can occur. Ensure that any adhesives used are suitable for bonding polystyrene foam.
- ▶ AUSTROTHERM XPS® must be installed and used in accordance with the recognised rules of good engineering practice and up-to-date technology. Constant attention must be paid to the particular conditions of the application during use, particularly in terms of physical structure. The local building regulations must be observed.

Austrotherm XPS® TOP 30 TB SF	Austrotherm XPS® TOP P	Austrotherm XPS® TOP P TB	Austrotherm XPS® TOP 50 SF	Austrotherm XPS® TOP 50 TB SF	Austrotherm XPS® TOP 70 SF	Austrotherm XPS® TOP 70 TB SF	Austrotherm XPS® TOP Drain
XPS	XPS	XPS	XPS	XPS	XPS	XPS	XPS
dh	dh	dh	ds	ds	dx	dx	dh
14 – 40 cm: 0.035	3 – 6 cm: 0.033 7 – 8 cm: 0.035 10 – 16 cm: 0.036	14 – 40 cm: 0.035	4 – 6 cm: 0.033 8 – 14 cm: 0.035 16 cm: 0.036 18 – 20 cm: 0.037	14 – 40 cm: 0.035	5 – 6 cm: 0.033 8 – 14 cm: 0.035 16 cm: 0.036 18 – 20 cm: 0.037	14 – 40 cm: 0.035	5 cm: 0.032 6 cm: 0.033 8 – 12 cm: 0.035 14 cm: 0.036
FIW Munich	FIW Munich	FIW Munich	FIW Munich	FIW Munich	FIW Munich	FIW Munich	FIW Munich
smooth	embossed	embossed	smooth	smooth	smooth	smooth	Groove and fleece
SF	GK	GK	SF	SF	SF	SF	SF
1250 600 T1	1250 600 T1	1250 600 T1	1250 600 T1	1250 600 T1	1250 600 T1	1250 600 T1	1250 600 T1
30	30	30	34	34	39	39	30
CS(10\Y)300 ≥ 300	CS(10\Y)300 ≥ 300 ¹⁾	CS(10\Y)300 ≥ 300	CS(10\Y)500 ≥ 500	CS(10\Y)500 ≥ 500	CS(10\Y)700 ≥ 700	CS(10\Y)700 ≥ 700	— ≥ 300
CC(2/1.5/50)130 130	— —	— —	CC(2/1.5/50)180 180	CC(2/1.5/50)180 180	CC(2/1.5/50)250 250	CC(2/1.5/50)250 250	— —
12000	12000	12000	20000	20000	25000	25000	12000
≥ 95	≥ 95	≥ 95	≥ 95	≥ 95	≥ 95	≥ 95	≥ 95
0 WD(V)3 ²⁾	0 WD(V)5 ³⁾	0 WD(V)5 ³⁾	0 WD(V)3 ²⁾	0 WD(V)3 ²⁾	0 WD(V)3 ²⁾	0 WD(V)3 ²⁾	0 WD(V)3 ³⁾
70	70	70	70	70	70	70	70
0.07	0.07	0.07	0.07	0.07	0.07	0.07	0.07
FTCD: 1	FTCD: 2	FTCD: 2	FTCD: 1	FTCD: 1	FTCD: 1	FTCD: 1	FTCD: 2
E	E	E	E	E	E	E	E*

The catalogue
Technical data
can be found on:
austrotherm.de



Austrotherm UNIPLATTE® Technical data

Austrotherm UNIPLATTE®		Dimensions (in mm)	Thickness (in mm)	Packing unit
Uniplatte 4	2.3 kg/m ²	1300 x 600	4	80 pcs/pal.
Uniplatte 6	2.4 kg/m ²	1300 x 600	6	160 pcs/pal.
Uniplatte 10	2.5 kg/m ²	1300 x 600	10	108 pcs/pal.
Uniplatte 10	2.5 kg/m ²	2600 x 600	10	108 pcs/pal.
Uniplatte 12.5	2.6 kg/m ²	2600 x 600	12.5	90 pcs/pal.
Uniplatte 20	2.8 kg/m ²	2600 x 600	20	60 pcs/pal.
Uniplatte 30	3.2 kg/m ²	2600 x 600	30	40 pcs/pal.
Uniplatte 40	3.5 kg/m ²	2600 x 600	40	30 pcs/pal.
Uniplatte 50	3.8 kg/m ²	2600 x 600	50	24 pcs/pal.
Uniplatte 60	4.1 kg/m ²	2600 x 600	60	20 pcs/pal.
Uniplatte 80	4.8 kg/m ²	2600 x 600	80	16 pcs/pal.
Uniplatte 100	5.4 kg/m ²	2600 x 600	100	12 pcs/pal.
Uniplatte 120	6.1 kg/m ²	2600 x 600	120	10 pcs/pal.
Austrotherm UNIPLATTE® L-shaped board		Dimensions (in mm)	Thickness (in mm)	Packing unit
L-shaped pipe box 15/15		2600 x 150/150	20	60 pcs/pal.
L-shaped pipe box 20/20		2600 x 200/200	20	40 pcs/pal.
L-shaped pipe box 30/30		2600 x 300/300	20	40 pcs/pal.
L-shaped pipe box 40/20		2600 x 400/200	20	40 pcs/pal.
Austrotherm UNIPLATTE® U-shaped board		Dimensions (in mm)	Thickness (in mm)	Packing unit
U-shaped pipe box 20/20/20		2600 x 200/200/200	20	50 pcs/pal.
U-shaped pipe box 20/40/20		2600 x 200/400/200	20	20 pcs/pal.
U-shaped pipe box 30/60/30		2600 x 300/600/300	20	12 pcs/pal.
Austrotherm UNIPLATTE® bathtub element		Dimensions (in mm)	Thickness (in mm)	Packing unit
Head piece 730 (incl. 1 levelling foot)		730 x 600	30	30 pcs/pal.
Length piece 1770 (incl. 2 levelling feet)		1770 x 600	30	30 pcs/pal.
Length piece 2100 (incl. 2 levelling feet)		2100 x 600	30	30 pcs/pal.

Technical properties of extruded polystyrene rigid foam (mean values):

Pressure resistance:	200 kPa
Thermal conductivity: λ_b	20 – 60: 0.033 W/mK 80 – 120: 0.036 W/mK
Diffusion resistance factor: μ	100-200
Capillary water absorption:	0 % Vol.
Application limit temperature:	70 °C
Fire behaviour:	"E" in accordance with EN 13501-1

Storage:

All Austrotherm UNIPLATTE® boards must be stored laid flat in a dry place. Austrotherm UNIPLATTE® boards must not come into contact with substances that contain solvents and must be protected from UV radiation.

Notes:

The information in this brochure is intended as non-binding advice on the basis of current technology. Where applicable, property rights must be observed. No legal obligation can be inferred from the contents of this brochure.

The base material is Austrotherm XPS® TOP with good ecological properties, as the cell content is air.

GENERAL TERMS AND CONDITIONS (GT&Cs)

1. SCOPE

1.1 The following General Terms and Conditions (hereinafter referred to as "GT&Cs") shall apply to the conclusion and execution of all contracts between us, Austrotherm GmbH, and our customers, hereinafter referred to as "contractual partners".

1.2 Unless otherwise agreed, any General Terms and Conditions of our Contractual Partner shall not apply, even if they appear in order confirmations, invoices or other documents of the Contractual Partner and remain uncontested by us.

1.3 All deliveries and services, including consultation, information, etc., shall be provided solely on the basis of these GT&Cs, to the extent that they are not modified or excluded with our explicit agreement.

1.4 To the extent that the Contractual Partner is a business operator, these conditions shall also apply to all future transactions with the Contractual Partner.

1.5 These GT&Cs have been drawn up for legal transactions between companies. Where they are used, in exceptional cases, as the basis for legal transactions with consumers, they shall apply only to the extent that they do not contradict the explicit protection of provisions for consumers.

2. OFFER (PURCHASE ORDER) AND CONTRACT CONCLUSION

2.1 The information on our website or in our current price list does not represent an offer. Contracts shall be concluded exclusively on the basis of the purchase order received in writing (by fax) or, verbally (by telephone) from the Contractual Partner, and on the basis of the content of our written order confirmation (referred to as the "OC") issued by email or fax.

2.2 If, in the Contractual Partner's view, our OC deviates from their purchase order, they must submit their complaint about this matter in writing immediately following receipt of our OC. Otherwise the order confirmation shall be considered as correct and shall be binding for both Parties.

2.3 Any corrections, supplements, modifications of the OC due to a justified and timely complaint shall be binding for us only once explicitly confirmed by us in writing, by email or fax.

3. SUBSEQUENT CHANGES

3.1 Changes to the service requested by the Contractual Partner after the OC has become binding can only be implemented in principle for an additional fee and with extension of the delivery deadline.

3.2 Any costs already incurred by the time at which the change request for the OC is received, and any other additional costs incurred, including the costs of any machine downtime resulting from the change request of the Contractual Partner, shall be charged.

3.4 The changes require our written confirmation.

4. WRITTEN FORM REQUIREMENT

4.1 Any declarations made by our employees verbally, by telephone or by telex, as well as any side agreements, shall become effective only following written confirmation by us.

4.2 The correctness and completeness of the written agreements shall be rebuttably presumed.

5. CONTRACTUAL PARTNERS

5.1 For orders with delivery to third parties, the orderer shall be considered to be the Contractual Partner, unless otherwise explicitly agreed.

5.2 The Contractual Partner may only assert warranty claims against us if and to the extent that their Contractual Partner has also asserted warranty claim against their.

6. PRICES

6.1 Our prices specified in euros are subject to change. They shall be specified explicitly in the OC (such as through explicit agreement of the terms and conditions of delivery, etc.).

6.2 It should be noted that the prices specified in our current sales price list are based on the costs at the time of the price quotation. Should significant factors in the price calculation change (such as price increases in the raw material, additives or energy and transport), we shall be entitled to adjust

the prices of the price list in a binding manner – although only for future purchase orders from our Contractual Partner.

7. TERMS AND CONDITIONS OF PAYMENT

7.1 Unless otherwise agreed for individual cases, invoices shall be due for payment immediately and without deductions. In the event of default, even in the event of default in payment through no fault of the Seller, the Seller shall claim default interest in the amount of the base interest rate of the Austrian National Bank plus a surcharge of 9.2% as well as collection costs of a lump sum of € 40.00 as well as the incurred collection expenses including solicitor's intervention costs. Furthermore, the Seller reserves the right to accept bills of exchange and cheques.

7.2 All transfers are carried out at the risk of the Contractual Partner and must be carried out such that the credit reaches us by the due date at the latest. In the event of default, we shall be entitled to claim interest on arrears for the respective overdue amounts in the amount of the respective daily interest rate for overdrafts – but at least 14 % per annum – plus VAT. The right to claim higher damages is expressly reserved. The Contractual Partner shall also be obligated to reimburse us for all pre-legal action and court costs incurred by us in pursuing our claims. Incoming payments shall be applied first to interest and expenses and then to the principal claim.

7.3 The Contractual Partner shall not be entitled to withhold payments due to counter-claims or to offset our claims with their own claims unless they indicate the assertion of the right of retention or the intended offset one month before the claim becomes due. The Contractual Partner shall moreover only be entitled to exercise a right of retention to the extent that their counter-claim is based on the same contractual relationship.

7.4. If the Contractual Partner is in default with an agreed payment or other service, or should we become aware of a deterioration in their financial circumstances, suspension of payments, application for moratorium, insolvency proceedings or execution becomes known, we shall be entitled, subject to the assertion of other claims, to declare all invoices from the invoice date due and to withdraw from all contracts. In the event of continuation of the contract, we can withhold further deliveries or services from ongoing contracts and demand advance payments until complete fulfillment of all obligations of the Contractual Partner.

7.5. If the Contractual Partner fails to comply with contractual obligations, in particular in the event of the occurrence of the loss of a deadline, we shall be entitled to remove any goods subject to retention of title from the Buyer's custody ourselves – if necessary by opening seals; in this case, the Contractual Partner shall waive any right it may have to bring an action for disturbance of possession under this title and the objection that the goods subject to retention of title are necessary for the maintenance of its business. We accept this waiver. Such a measure only serves to ensure our safety. All related costs shall be borne by the Contractual Partner.

7.6. We reserve the right to accept bills of exchange, and we may reject cheques if there are reasonable doubts regarding coverage. Acceptance shall only ever be conditional. Discounting and collection fees and all other costs shall be charged to the Contractual Partner and shall be payable immediately in cash. We shall not be obligated to issue timely submissions, protests, etc.

8. DELIVERY DATES AND DEADLINES

8.1 Each individual order or request shall be subject to the agreement on delivery deadlines.

8.2 If we are prevented from fulfilling our delivery obligations due to force majeure, industrial action, lockout, employee or energy shortages, lack of transport possibilities, traffic disruption and operating malfunctions, days of bad weather, pandemics, epidemics or other unforeseeable events which could not be avoided despite reasonable precautions, regardless of whether they occur in our company or with our suppliers, the delivery period shall be extended by the duration of the obstruction, as well as an appropriate start-up time after the end of the obstruction, if we did not cause the obstruction

intentionally or through gross negligence. This shall not be associated with a change in the burden of proof at the Contractual Partner's expense.

8.3 Where possible, agreed delivery dates shall not be exceeded, but the unforeseeable events listed in Point 8.2 shall exempt us from timely fulfilment, without restriction of our right to subsequent delivery, as well as from all claims for compensation, loss of profit or default penalties arising due to delayed deliveries or deliveries not carried out.

9. SHIPPING/TRANSFER OF RISKS

9.1 The shipping type and route shall be agreed in the OC. Shipping is at the risk of the Contractual Partner.

9.2 For deliveries to construction sites, we require access roads, which can be driven on by heavy goods vehicles with trailers, and immediate unloading by the Contractual Partner, otherwise the Contractual Partner shall be liable for any damage incurred and for additional expenses.

9.3 To ensure the claims for compensation due to transport damage or losses, the Contractual Partner must have complaints confirmed on the transport company's delivery note or apply for the facts to be recorded at the responsible receiving train station.

9.4 The risk of random loss or random deterioration shall be transferred to the Contractual Partner upon handover to the transporter – even if the freight is arranged and paid for by us up until the destination.

10. PARTIAL DELIVERIES, DELIVERY OF SURPLUS OR REDUCED QUANTITIES

10.1 We shall be entitled to make partial deliveries. Payment for these shall be due in accordance with these GT&Cs.

10.2 We reserve the right to a quantity deviation (additional or reduced delivery) of one (1) percent, especially since additional quantities are sometimes loaded. The Contractual Partner shall tolerate such quantity deviation. The assertion of claims due to larger shortfalls shall require the submission of a certificate from the transporter. However, the Contractual Partner cannot derive any rights from insignificant quantity deviations.

11. DEFAULT IN ACCEPTANCE

11.1 Should the Contractual Partner default on acceptance, we shall be entitled, after fruitless expiry of an appropriate grace period, to obtain the goods via other channels or to provide the Contractual Partner with an appropriately extended grace period.

11.2 Our statutory rights to withdraw from the contract and demand compensation due to non-fulfilment shall remain unaffected.

11.3 Sections 373, 374 of the Commercial Code (Unternehmensgesetzbuch) shall also remain unaffected.

11.4 If we are entitled to demand compensation in place of delivery, then this shall amount to 30 percent of the contractually agreed price, subject to a higher claim for compensation to be proven by us. The Contractual Partner shall be entitled to obtain proof that we incurred no damage or less significant damage.

12. RETENTION OF OWNERSHIP/SECURITY RIGHTS

12.1 The supplied goods shall remain our property until all financial obligations of the Contractual Partner have been completely fulfilled. The Contractual Partner shall store the goods carefully during the scope of this retention of ownership

12.2 Insofar as the Contractual Partner is a merchant, ownership shall only be transferred following complete payment of all ancillary claims associated with the contractual relationship and all other claims owed to us by the Contractual Partner as a result of their business relationship with us.

12.3 Before complete payment has been made, the goods must neither be pledged nor collateralised.

12.4 The Contractual Partner shall only be entitled and authorised to resell the reserved goods on the condition that our written declaration of consent is provided and that the purchase price claim from the resale is transferred to us. In the case of resale, the Contractual Partner shall thereby, from now and until fulfilment of all our claims, assign to us

any claims received by them through the resale.

12.5 The Contractual Partner undertakes, at our request, to provide all information immediately and hand over any documentation required to assert our rights vis-à-vis the customer of the Contractual Partner.

12.6 If a court order seizes the assets of the Contractual Partner, and if the disputed goods are affected by this or if other claims to the disputed goods are asserted by third parties, then we must be given written notification of this along with all required data (enforcement office, file number, miscellaneous), if relevant with provision of enforcement reports.

12.7 In the case of currently invoiced deliveries, the retention of ownership serves as a security for our balance of account. The Contractual Partner shall be entitled to sell the goods supplied by us in usual business transactions. If the Contractual Partner's orderer sells the goods on their part, without receiving the full purchase price of the purchased item in advance or concurrently, then they must agree a retention of ownership with the customer, in accordance with these conditions. The Contractual Partner now already transfers to us their claims from this resale as well as the rights from the retention of ownership agreed by them until complete repayment of all our claims from goods deliveries, regardless of whether the reserved goods were processed or unprocessed or whether they were sold to one or more customers. At our request, the Contractual Partner shall be obligated to make their customer aware of the assignment of rights, provide us with the necessary information for assertion of our rights vis-à-vis the customer and provide the corresponding documentation. The above-mentioned rights serve to protect our claims in the amount of the invoice value of the goods supplied by us under retention of ownership.

13. WARRANTY

13.1 The warranty period for our goods and deliveries vis-à-vis companies is six months, unless longer periods are prescribed by law or unless otherwise expressly agreed, in each case from the transfer of risk. The applicable statutory time limits shall apply vis-à-vis consumers.

13.2 The statutory liability for defects shall remain unaffected by the general limitation of liability (Point 14 of these GT&Cs).

13.3 The Contractual Partner shall always bear responsibility for the disadvantageous consequences of incorrect order information.

13.4 If the Contractual Partner collects the goods from us themselves, complaints about defects must be made immediately.

13.5 The Contractual Partner is obligated in accordance with Sections 377, 378 of the Commercial Code to check that the goods are complete and free from defects immediately following receipt and to provide us with written notification of any defects immediately (within eight days) upon receipt of delivery. In the event that our Contractual Partner or a person attributable to him does not personally take delivery of the goods, they shall be deemed to have been delivered free of defects. If the Contractual Partner fails to provide notification, the goods shall be deemed to have been approved, unless the defect was not visible at the time of examination. In the event that such a defect is found at a later point, the buyer must provide notification immediately on discovery; otherwise the goods shall be deemed to have been approved even in consideration of this defect. The goods must not be used until final, mutual written or legal declaration under exclusion of our liability and must be stored by the Contractual Partner in such a way that damage is ruled out.

13.6 If the complaint is submitted properly and on time and is justified, we may, at our discretion and within a reasonable period of time, carry out an improvement (rectification or addition of what is missing), exchange the goods, grant an appropriate credit note or cancel the contract (rescission), provided that the goods are demonstrably unusable or their usability is considerably impaired due to a circumstance before the transfer of risk, in particular due to an incorrect design, poor construction materials or defective execution.

However, the Contractual Partner must provide an opportunity for inspection of the reported defects on site. Processing of our goods must be in agreement with any processing guidelines developed by us or in accordance with the recognised rules of structural engineering. The Contractual Partner shall be responsible for procuring the above-mentioned guidelines. In order to undertake all improvements or replacement deliveries that become necessary, the Contractual Partner must allow the required time and opportunity following prior agreement, otherwise an exemption from the liability for defects shall enter into force. Should the supplementary performance fail, the Contractual Partner may withdraw from the contract or reduce the amount paid.

13.7 All warranty claims are limited in amount to the value of the defective goods delivered by us.

13.8 In the event of unjustified claims for defects, the Contractual Partner must pay all fees and costs associated with the treatment and inspection of said defects.

14. GENERAL LIMITATION OF LIABILITY/ LIABILITY

14.1 For damage that causes injury to life, body or health, we shall only be liable if such damage is due to a violation of an obligation with intent or gross negligence on our part, or to a violation of an obligation with intent or gross negligence on the part of one of our legal representatives or vicarious agents.

14.2 We shall only be liable for other damage to the extent that it is due to a violation of an obligation with intent or gross negligence by us or our legal representatives or vicarious agents, and for which a claim has been asserted due to the lack of contractually promised properties. In any case, claims for compensation shall only cover pure damage repair, but not further claims, such as those due to consequential damage or lost profit, to the extent that this does not violate mandatory legal provisions.

14.3 Any dimensions, weights or quality information provided in catalogues, technical data sheets, brochures and illustrations are, like specimens or samples, guide values of our respective average production. All drawings, plans, quantity extracts and requirements assessments which we provide to the Contractual Partner are non-binding. These are our property and, except subject to written special agreement, must not be made available to third parties. For processing or consultation instructions, or similar, we shall only accept liability (Point 14.1 and 14.2) for whatever legal grounds, if these instructions were issued by us in a binding, written form and in relation to a specific construction project for which we were aware of all relevant details. In any case, the Contractual Partner remains obligated to check our instructions, taking into account the product descriptions and properties of our goods and of the specific purpose and, in case of doubt, to consult an expert.

14.4 The Contractual Partner waives the right to assert special recourse claims (such as, in particular, based on Section 933 b para. 1 of the Austrian Civil Code). This can only be deviated from by mutual agreement in writing by agreeing on a judicial assertion within two months – from the fulfilment of the Contractual Partner's warranty obligation towards its customers.

14.5 In the case of incomplete deliveries or incorrect deliveries which are not tolerated by the Contractual Partner, or if another of our obligations is violated in any other way, the Contractual Partner shall set a reasonable period of time for delivery of the missing quantity, delivery of the owed goods or for rectification of the violated obligation.

15. PRODUCT LIABILITY

15.1 To the legally permissible extent, we shall not be liable to the Contractual Partner for material damage incurred through cases of product liability. The Contractual Partner shall be obligated to cooperate in all matters pertaining to product liability law, in order to avert or reduce damage. This means that we must be notified immediately of any issues perceived by the Contractual

Partner, or perceived or communicated by their Contractual Partners, which result from product liability-related causes. Should we decide to offer a product return, the Contractual Partner shall be obligated to stop selling the goods designated by us with immediate effect and to cooperate in the exchange of the returned goods for new goods. We shall replace the returned goods as quickly as possible with goods of equivalent value. Claims of the Contractual Partner from such return actions shall be explicitly excluded.

15.2 Any liability according to other legal regulations, beyond the obligation to pay compensation in accordance with the German Product Liability Act, shall concern us only if intent or gross negligence on our part can be proven. In any case, a prerequisite for our liability is that the Contractual Partner or any of their customers have complied with all warnings, usage instructions and other product declarations, etc. The Contractual Partner is furthermore obligated to notify the end user of these warnings and other instructions in their full and current version, where possible in the written form.

16. DATA PROTECTION

We comply with the legal regulations regarding data protection. We expect our business partners to do the same.

17. ADVERTISING

17.1 We also reserve the right to use the items produced on behalf of the Contractual Partner as specimens or for advertising purposes.

17.2 The Contractual Partner can at any time object to usage for these purposes.

18. PLACE OF FULFILMENT, JURISDICTION AND APPLICABLE LAW

18.1 The place of fulfilment for all obligations arising from this Contract shall be the location of our respective delivery plant/our warehouse.

18.2 For any disputes arising from present or future claims arising from a business relationship with companies, including claims based on bills of exchange and cheques, the place of jurisdiction shall be the respective court having subject-matter jurisdiction in the judicial district of Wiener Neustadt.

18.3 The legal relationships between the Parties are subject to Austrian law, with the exclusion of UN sales law and the principles of international private law. This shall also apply if the Contractual Partner has their place of residence, their permanent domicile or their branch in a foreign country.

19. IT SECURITY

The seller expressly states that all organisational and technical measures have been implemented to exclude or prevent cyber-crime attacks as far as possible. These measures correspond to state-of-the-art technology and are continuously updated. In the event that a disruption or failure of IT systems should nevertheless occur, the seller excludes any liability for resulting negative consequences and, in particular, any damage.

20. WITHDRAWAL FROM THE CONTRACT

Shortage of raw materials, prolonged machine defects, delays in delivery, strikes, transport difficulties, official orders, as well as generally all cases of delay in delivery for which the Seller is not responsible, including force majeure (natural disasters, war, civil war, riots, pandemics, etc.) entitle the Seller to extend the delivery periods accordingly or to withdraw from the contract without the Buyer being entitled to claim damages.

21. SEVERABILITY CLAUSE

Should one or more of the provisions of these GT&Cs be or become ineffective, this shall not impact the effectiveness of the remaining provisions. Invalid provisions shall be replaced with regulations that most closely approximate the purpose and meaning of the invalid regulation. These GT&Cs are an integral part of every contract completed with us.

Subject to errors, including print errors.



Austrotherm GmbH

A-2754 Wopfing, Friedrich Schmid-Straße 165, Tel: +43 2633 401-0, info@austrotherm.at, austrotherm.com

Austrotherm Dämmstoffe GmbH

19322 Wittenberge, Hirtenweg 15, Tel.: +49 3877 5650-610, info@austrotherm.de, austrotherm.de